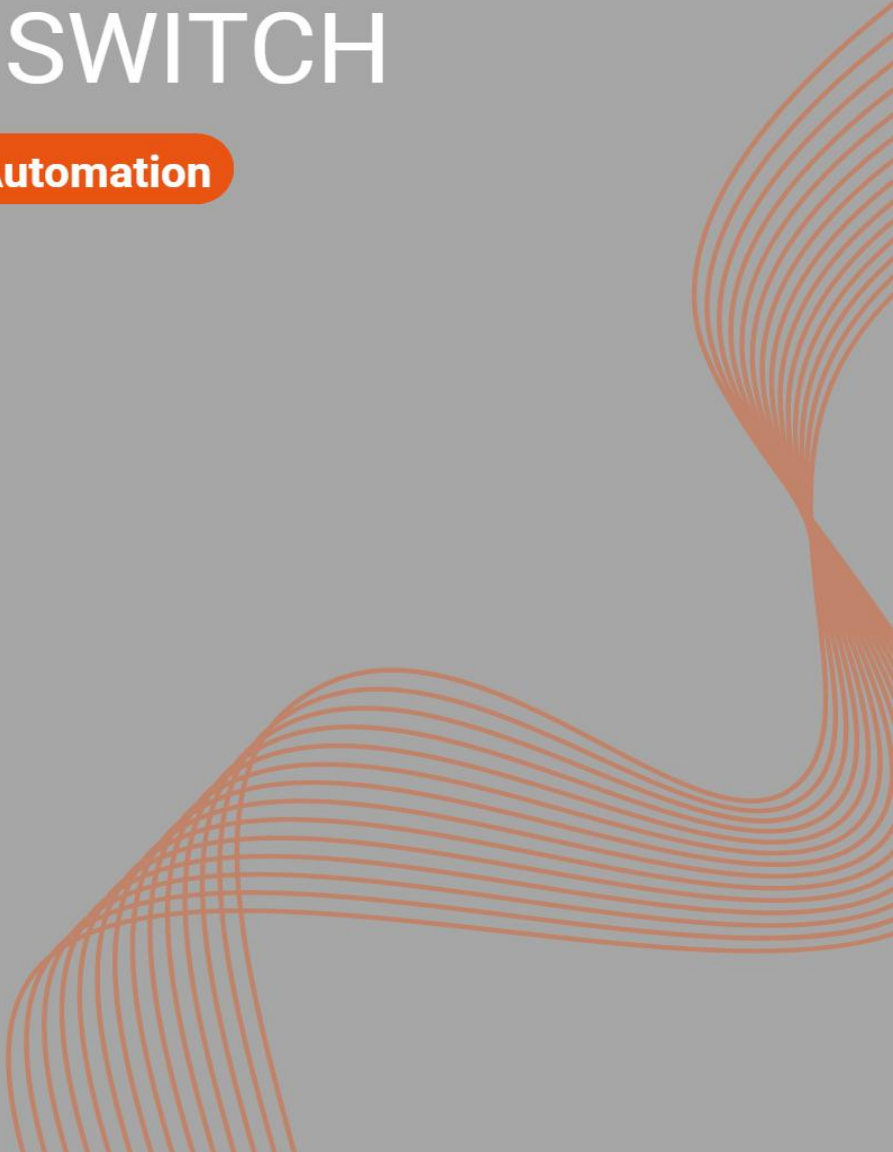


FIBERROAD

UNMANAGED INDUSTRIAL ETHERNET SWITCH

Designed For Industrial Automation

Product Data Sheet



Auto Pro Unmanaged Industrial Switches

The AUTO PRO series developed by Fiberroad for industrial automation, delivers reliable Ethernet networking and transmission on the industrial control OT side. Built with industrial standards, it features a compact aluminum alloy housing (IP40), fanless heat dissipation, and high-level EMC immunity—operating seamlessly from -40°C to 75°C even in harsh electromagnetic environments. As a plug-and-play unmanaged switch, it supports broadcast storm suppression, QoS-4 queue priority, and real-time forwarding of Profinet 0x8892 key frames (complying with Profinet-A conformance), ensuring stable data transmission for PLCs and I/O modules. Available in 100M/1000M variants (5-port/8-port) with DC9~48V wide voltage input, it adapts flexibly to diverse on-site requirements.

Main Features

- ❖ Wide temperature design: Supports -40°C~75°C
- ❖ Complies with Level 4 industrial EMC immunity requirements, resistant to all harsh electromagnetic interference environments
- ❖ DIP Switch supports Broadcast Storm Protection
- ❖ Built-in QoS-4 priority queues, enabling automatic priority forwarding during network congestion
- ❖ Complies with PROFINET CC-A conformance requirements.
- ❖ Meets on-site insulation performance requirements
- ❖ Compact structural design, suitable for embedded installation in any cabinet; high-quality aluminum alloy housing with heat-conducting design.



Auto Broadcast Suppression The switch independently learns the addresses of termination devices connected to a port by evaluating the source addresses in the data. Only packets with unknown addresses, with a source address of this port or with a multicast/broadcast address in the destination address field are forwarded via the corresponding port. Up to 2048 MAC addresses can be stored.

Auto PROFINET PTCP Filtering By filtering frames with destination MAC addresses in the range 01-80-C2-00-00-0F, Auto PROFINET PTCP Filtering blocks PROFINET PTCP-Delay traffic. Because PTCP-Delay uses the same MAC address (01-80-C2-00-00-0E), the filter blocks LLDP traffic as well.

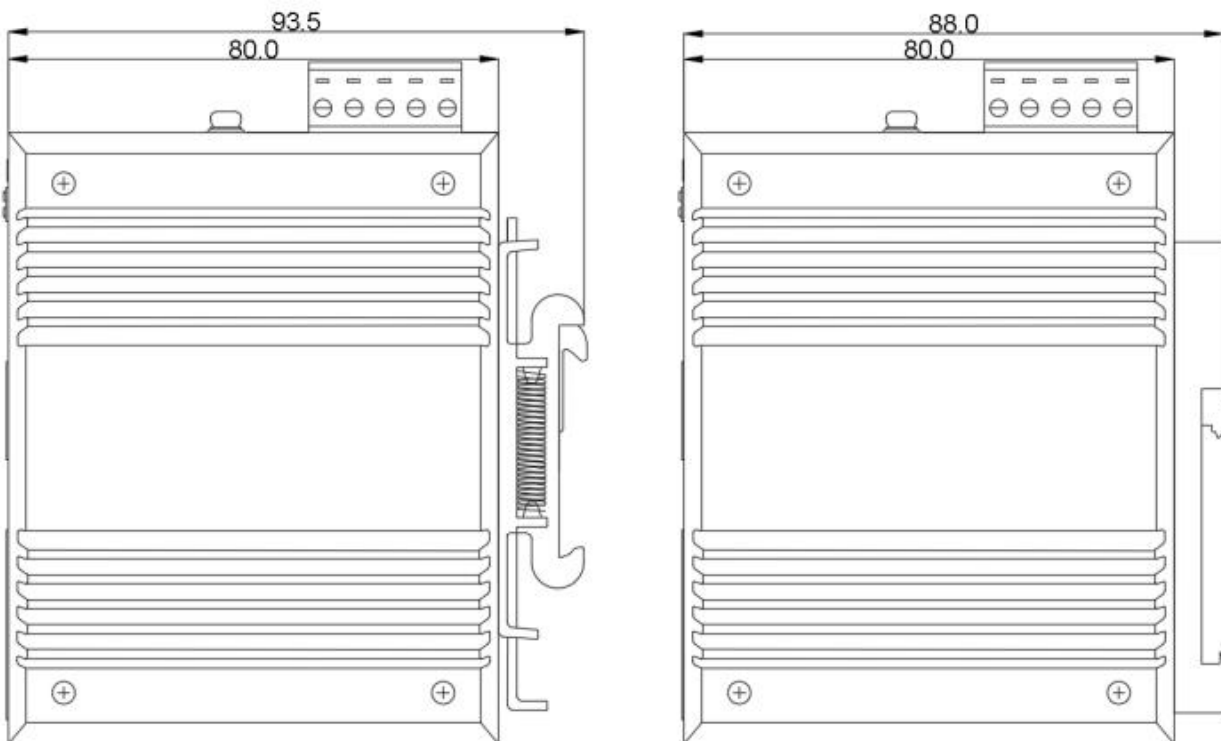
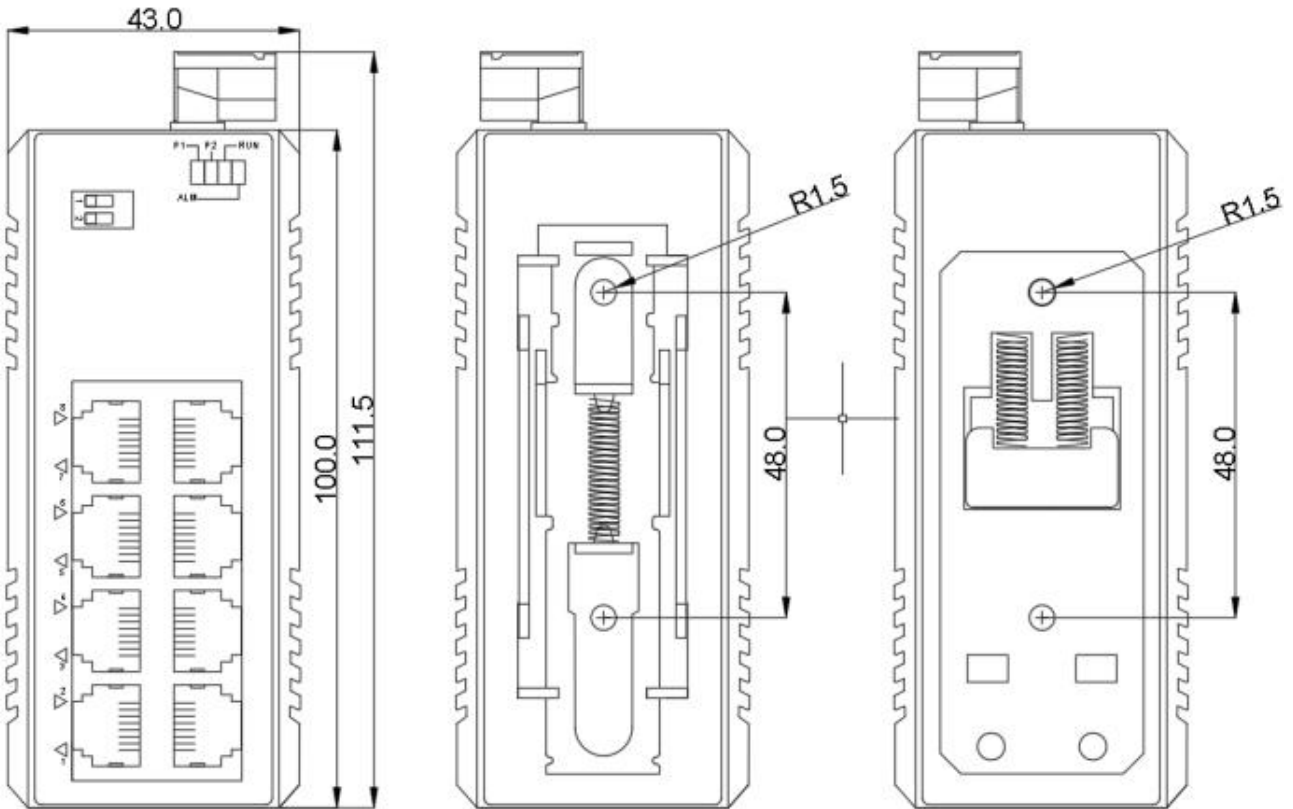
Auto QoS Priority When heavy traffic occurs, packets with an 802.1Q priority level of 4 to 7 or with an IPv4 Type of Service Precedence value of one or more are considered high priority and are processed before packets with an 802.1Q priority level of 0 to 3 or an IPv4 Type of Service value of one or more.

Product Specifications

	FICE1005	FICE1008	FICE1016
10/100Base-TX RJ45	5	8	16
Power Supply			
DC12~48V	Yes	Yes	Yes
Redundant input	Yes	Yes	Yes
AC/DC220	-	-	-
Power Consumption	≤1.1W	≤1.6W	≤5W
Function			
Broadcast Suppression	Yes	Yes	Yes
QoS-4 Queue	Yes	Yes	Yes
PROFINET Class A Compliance	Yes	Yes	Yes
Environmental			
Operating Temperature	-40°C~75°C		
Storage Temperature	-40°C~85°C		
Operating Humidity	5%~95% (non-condensing)		
EMC Immunity Design Specifications			
ESD	Air: ±15kV Contact: ±8kV		
Surge	Power supply common-mode ±4kV, differential-mode ±2kV, Ethernet port common-mode ±2kV		
EFT	Power supply ±4kV, Ethernet port ±2kV		
Physical Characteristics			
Housing	High-strength aluminum alloy housing with deep heat sink grooves and fanless cooling design		
Dimensions	100mm×43mm×80mm	152mm×54mm×127mm	
Net weight	400g	1026g	
IP Rating	IP40		
Installation	Din-rail installation with standard spring-loaded metal rails		

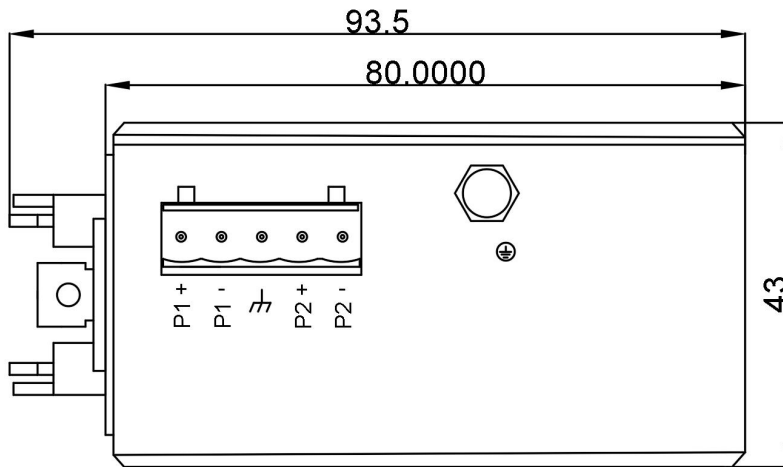
Dimensions-FICE1005/08

Unit: mm



Dimensions

Unit: mm



Dip Switch and LED Indicators

DIP Switch	Name	Status	Description
#1	Broadcast Storm Protection	OFF	Disable
		ON	Enable
#2	Function Reservation	\	\

LED Indicators

PI & P2	ON: Power is being supplied , OFF: Power is not being supplied
LINK/ACT	ON: Port connection is active, Blinking: Data transmitted, OFF: Port connection not active
RUN	Blinking: The system is running well, OFF: The system is running unwell

Precautions

To avoid damage to the equipment and personal injury caused by improper use, please observe the following precautions:

- ❖ Keep the power off during installation, wear an anti-static wrist, and ensure that the anti-static wrist is in good contact with the skin to avoid potential safety hazards.
- ❖ The switch can work normally under the correct power supply. Please confirm that the power supply voltage matches the voltage indicated by the switch.
- ❖ Before powering on the switch, please make sure that the power circuit is not overloaded, so as not to affect the normal operation of the switch and even cause unnecessary damage.
- ❖ To avoid the risk of electric shock, do not open the case while the switch is working, even if it is not charged, do not open it yourself.
- ❖ Before cleaning the switch, pull out the power plug of the switch. Do not wipe with a wet cloth. Do not use liquid to clean it.
- ❖ The equipment installed in the rack is generally from bottom to top to avoid overload installation.
- ❖ Avoid placing other heavy objects on the surface of the switch to avoid accidents.

Order Information

Model Number	10/100/Base-T(X), RJ45	10/100/1000Base-T(X), RJ45	Input Voltage	Operating Temp.
FICE1005	5		DC12-48V	-40 to +75°C
FICE1008	8		DC12-48V	-40 to +75°C
FICE1016	16		DC12-48V	-40 to +75°C
FICE2005		5	DC12-48V	-40 to +75°C
FICE2008		8	DC12-48V	-40 to +75°C
FICE2016		16	DC12-48V	-40 to +75°C

Shipping

Model No.	FICE1005	FICE1008	FICE1016
Classification Codes	HS Code: 851762		
	HTS: 8517.62.00		
NDAA Compliant	Yes		
Individual Gross Weight	0.4kg		0.8kg
Individual Package Dimension	150*118*53		201*171*73
Package Quantity	62 Units		20 Units
Package Gross Weight	25.2kg		17.6kg
Package Dimension	500*320*450mm		422*385*375mm



Old version



New version

The information in this document is subject to change without notice. Fiberroad has made all effects to ensure the accuracy of the information, but all information in this document does not constitute any kind of warranty. Visit our website for the most up-to-date product information

For more information

For more information about Fiberroad Smart Industrial Ethernet series products, Visit <https://www.fiberroad.com> or contact your local account representative.