

# Kyvision 3.0

## Network Management Software



- High performance network management software, supports 10 users at the same time and can monitor up to 1000 devices
- Auto-detection of devices, and real-time event alerts to user
- Auto-generation of network topology with circular or square layout
- Supports record and query of operation and system logs
- Provides Socket and OPC interfaces for user secondary development
- Batch upload and download of configuration files, along with multiple simultaneous software upgrades by built-in FTP server

## Overview

Kyvision is the network management software designed by Kyland for monitoring, configuring and maintaining industrial Ethernet switches like SICOM series and KIEN series in industrial communication network as well as other RFC1213-compliant devices.

Designed according to TMN regulations, its management functions include facility management, alarm management, right management, topology management and configuration management. Meanwhile, Kyvision provides maintenance functions to cope with different access networks such as topology interface, topology connecting display, topology alarm association display, operation diary record and so on, making it more convenient and efficient for users to maintain and update networks.

Employed JAVA and C/S, Kyvision is suitable to work on multiple operation platforms such as Windows, Solaris and Linux.

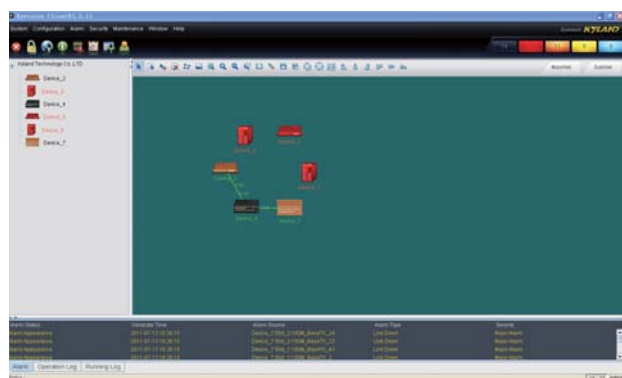
## Features & Benefits

1. Supports multi-clients end, at most 10 users at the same time (can be expanded according to customer's requirements)
2. Supports two kinds of topology methods: network segment topology and appointed IP topology, auto-detection of devices and auto-generation of topology connection between devices
3. Powerful network management software, able to manage up to 1,000pcs of devices (can be expanded according to customer's requirements)
4. Able to work on Windows, Solaris and Linux operation platform
5. Alarm ring notification and alarm confirmation mechanism supported
6. Supports configuration interface display, dynamically showing device status
7. Supports alarm history query, able to query alarm history according to subnets, devices and time period; supports alarm data output
8. Supports operation diary records, able to examine the maintenance and operation diary of the system
9. Supports user management, right class management and subnet right management, able to configure management domains according to users' requirements
10. Display in English or Chinese
11. Humanized interface configuration function, including subnet topology display, facility navigation bar display, network management incident display, facility alarm association display and so on
12. Provides network management of Socket and OPC interfaces, making it possible for users' further development

## Device Management

- Create new subnet and device
- Delete device
- Device's configurations and information
- Configure SNMP
- PING device
- Manage via Telnet and web browser
- Alarm all
- Configure device properties

## Topology Management

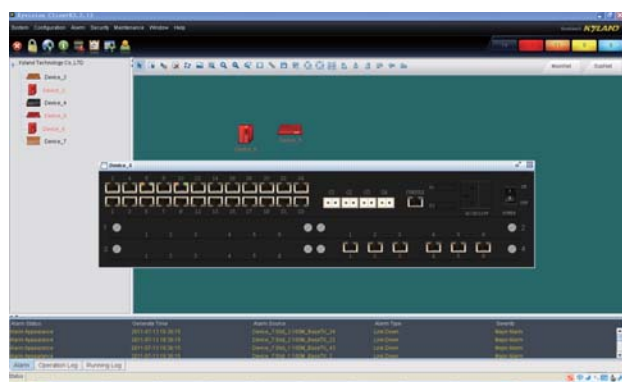


Two-dimensional display of device topology in the home topology interface and alarm association display of communication problems (the color of corresponding alarm icons will also be changed).

Topology connection display between devices and port alarm association display (If there is an alarm, the color of the connection line will be changed).

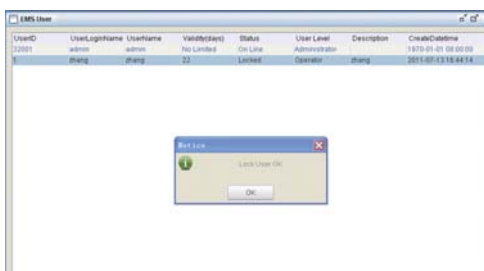
Fast auto-topology and connection, supports manually set connections

## Configuration Management



There are two ways to view device configuration picture: double click the device in network topology area or click the device with the right key and choose "view device configuration". The configuration diagram dynamically showing the port status of the devices

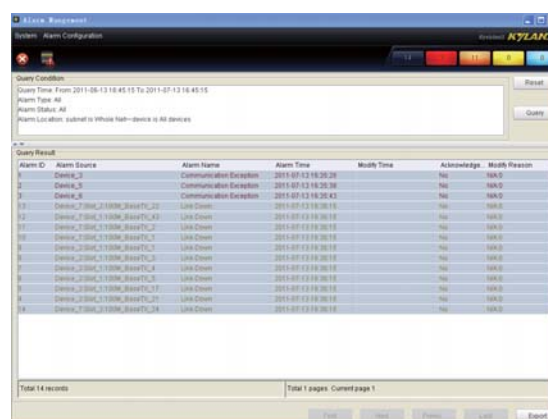
## Authority Management



User authorities include creating administrator, deleting users and modifying user properties. Subnet right is to assign manageable subnets to existing users.

This software provides three kinds of management rights: Administrator, Operator and Monitor. Administrator has all the rights, including device management, alarm management, user management, subnet right management and function monitoring; Operator has all the rights of Administrator except user management; Monitor only has the monitoring right.

## Alarm Management



The alarm management modular continuously checks all the devices and the alarm of switch communication problems. Through TRAP message sent from corresponding switches and alarm information of switch status, it monitors switch status alarm and records the alarms into the database. In the home topology diagram, the color of device pictures and topology links, the alarm display bar, the device color in tree-shape navigation together reflects the device alarm status. It provides current alarm and alarm history checking and data output of alarm history according to subnets, devices, time period, alarm type and so on. Alarm informing is sent by bell ringing, email and short message and can be shielded separately.

## Personalized Configurations

Kyvision provides device picture changing, topology background color or picture changing, alarm bell sets changing functions, which is able to offer different visual and sound effects

## System Requirements

CPU: Pentium 4, 1.6GHz  
Memory: 1.0G  
Disk Space: 2.0G  
Screen: 1024x768