

# QuMax for RUTX11

P/N: AX11M230

## INTEGRATED MULTI-BAND LTE OMNI ANTENNA + GPS ANTENNA + BLUETOOTH ANTENNA + POWER SUPPLY + PLACE TO INSTALL TELTONIKA RUTX11 (ALL-IN-ONE)

QuMax omni LTE antenna for Teltonika RUTX11 router is a perfect outdoor device for mobile and fixed installations like industrial, CCTV, hotspots, yachts, boats, campers, RV etc. It has embedded GPS and Bluetooth antennas all powered by embedded Power Supply. If you use RUTX11 with QuMax antenna, you get an integrated complete solution with embedded router, Power Supply and multi band antennas in one enclosure.



VERSION 1.00

## OUTDOOR

Use Teltonika router wherever you want

## ANTENNA

Maximize your signal with QuWireless antennas

## SOLUTION

Plug Teltonika router and you are good to go

**LTE SPECIFICATION**

FREQUENCY	0.694-0.96 GHz 1.7 - 2.2 GHz 2.2 - 2.7 GHz
SUPPORTED LTE/5G BANDS	1, 2, 3, 4, 5, 6, 7, 8, 9, 10, 12, 13, 14, 17, 18, 19, 20, 23, 25, 26, 27, 28, 29, 30, 33, 34, 35, 36, 37, 38, 39, 40, 41, 44, 53, 59, 62, 65, 66, 67, 68, 69, 85, n80, n81, n82, n83, n84, n86, n89, n90, n95
GAIN	0.694 - 0.96 GHz : 2 dBi 1.7 - 2.2 GHz : 2 dBi 2.2 - 2.7 GHz : 4 dBi
VSWR	<1.60, max <2.00
BEAMWIDTH	360°/35° +/- 5°
POLARIZATION	Vertical
IMPEDANCE	50 $\Omega$

**BLUETOOTH SPECIFICATION**

FREQUENCY	2.40-2.50 GHz
GAIN	3 dBi
VSWR	<1.70, max <2.00
BEAMWIDTH	360°/25° +/- 5°
POLARIZATION	Vertical
IMPEDANCE	50 $\Omega$

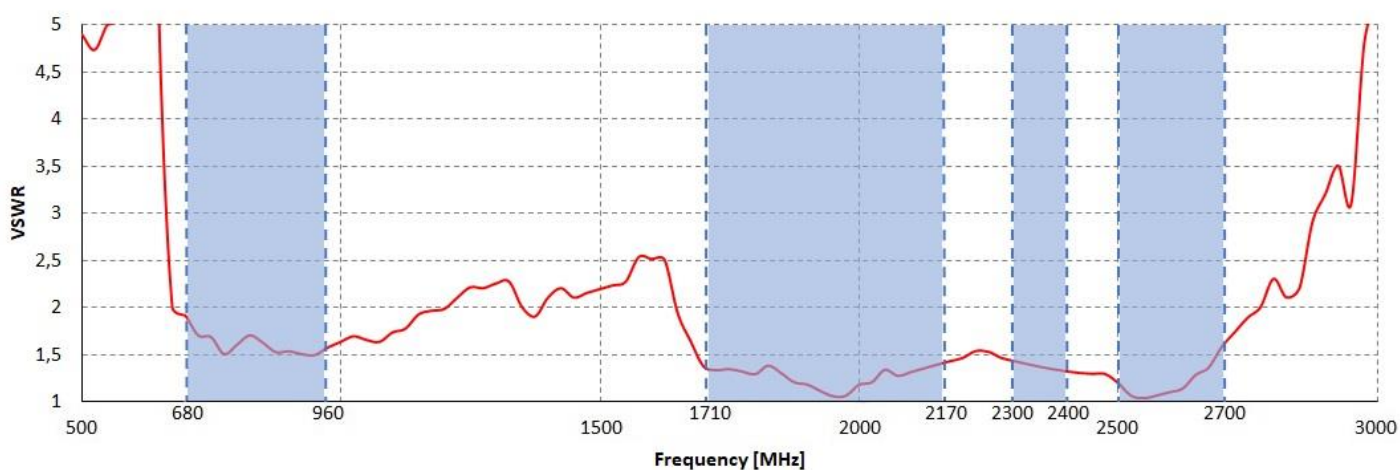
**MECHANICAL SPECIFICATION**

MATERIALS	ABS, aluminum, PTFE, FR4, Fiberglass
INGRESS PROTECTION	IP67
CONNECTOR TYPE	QuPS3(3-pin 230V power plug)
DIMENSIONS	272 x 276 x 96 mm 10.71 x 10.87 x 3.78 inch
WEIGHT	1.8 kg 3.97 lbs
OPERATING TEMPERATURE	From -40°C to 75°C From -40°F to 167°F

## POWER SUPPLY

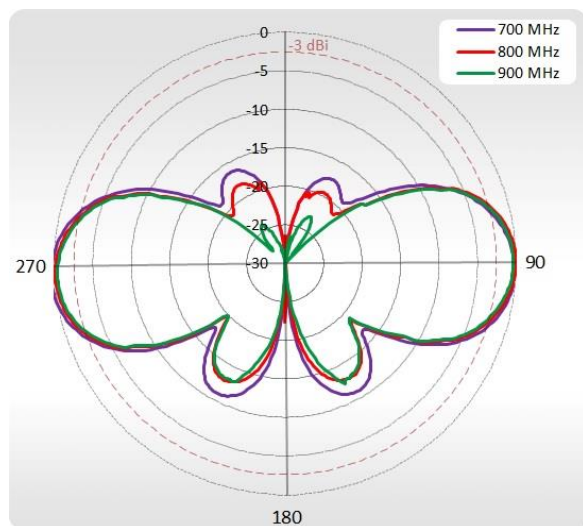
POWER	26.4 W
OUTPUT CURRENT	1.1 A
TYPE	Pulse
EFFICIENCY	86%
INPUT VOLTAGE	88...264V AC, 125...372V DC
OUTPUT VOLTAGE	24V DC

## VSWR for LTE antenna

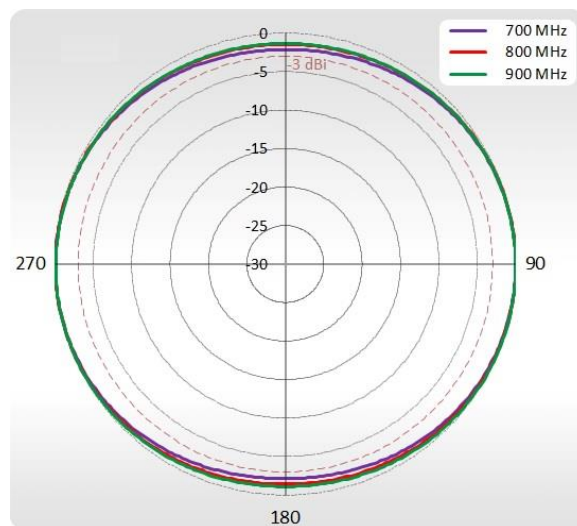


## PLOTS

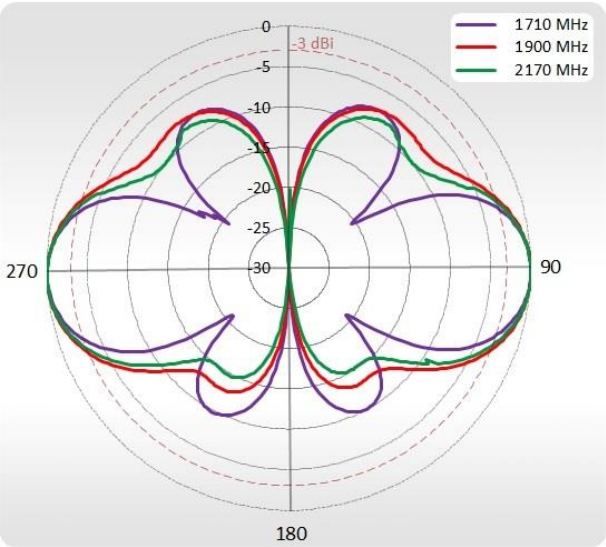
700-900 MHz Azimuth



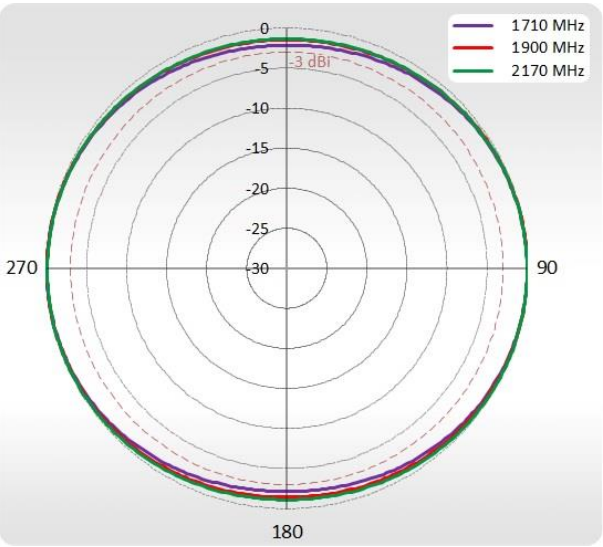
700-900 MHz Elevation



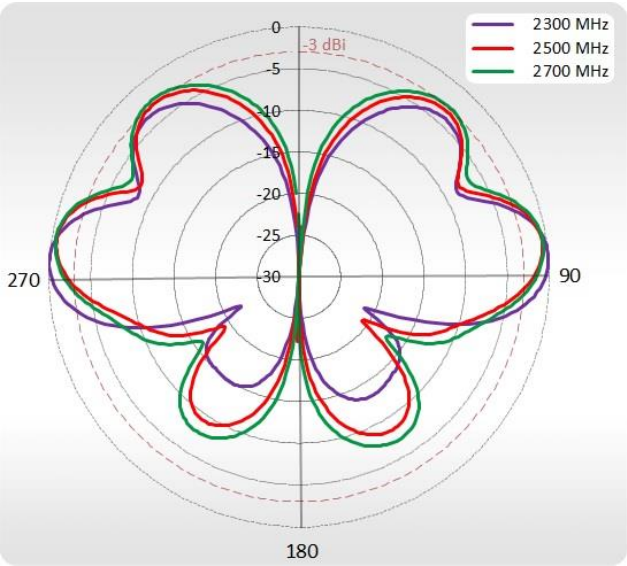
710-2170 MHz Azimuth



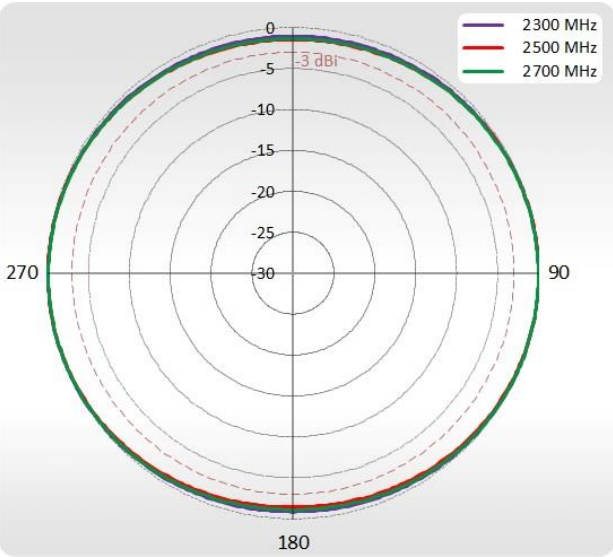
1710-2170 MHz Elevation



2300-2700 MHz Azimuth



2300-2700 MHz Elevation





## DEVICE SPECIFICATION



Most powerful and feature rich device within Teltonika Networking products range. Equipped with Dual-SIM, 4 x Gigabit Ethernet ports, Dual-Band AC WiFi, Bluetooth LE and USB interfaces. RUTX11 comes with all RutOS software and security features. This device is perfect for advanced Industrial and Enterprise applications.

---

[RUTX11 Datasheet](#)

---

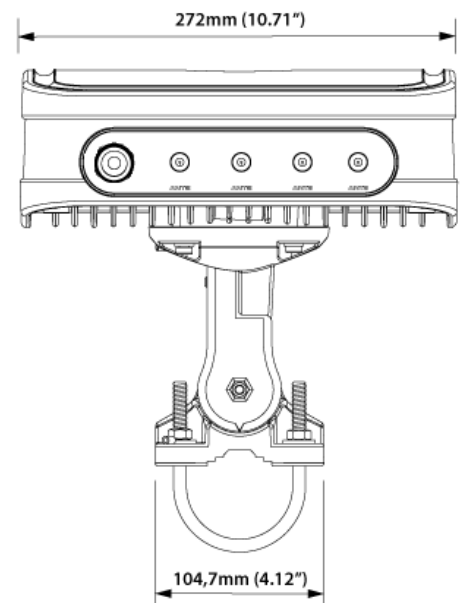
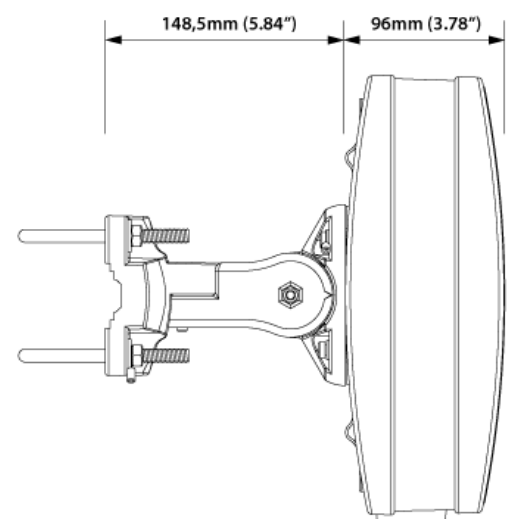
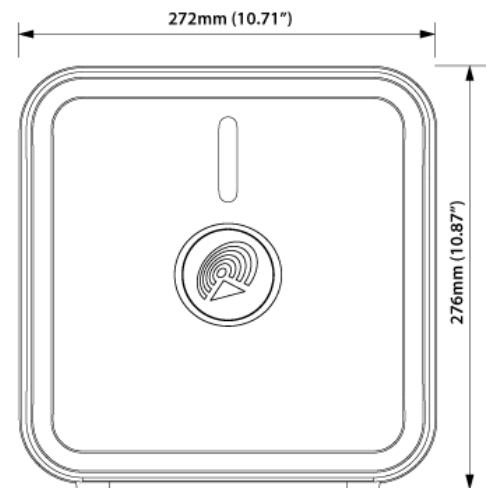
[RUTX11 User Manual](#)

---

[RUTX11 Quick Start Guide](#)

---

## DIMENSIONS



### HEADQUARTER:

Wireless Instruments sp. z o.o.

ul. Kościuszki 27

52-116 Iwiny

POLAND

[sales@quwireless.com](mailto:sales@quwireless.com)

tel 1. +48 601 366 369

tel 2. +48 577 667 761

[www.quwireless.com](http://www.quwireless.com)