

iTN8601-OTM4

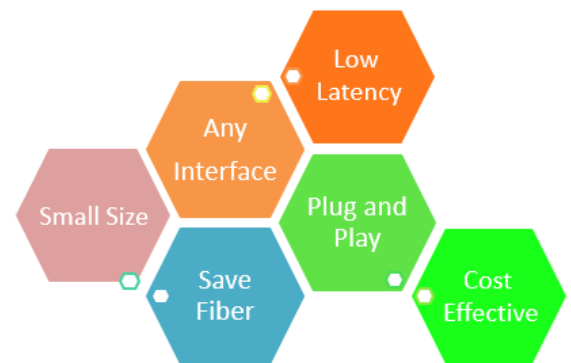
The iTN8601-OTM4 is an advanced fiber multiplexer available in capacities ranging from 1.25Gbit/s to 11.3Gbit/s. The iTN8601-OTM4 multiplexes rate service signals to a 1-core fiber for fiber resource conservation. Typically used in point-to-point configurations, the device is deployed in pairs designed for either short or long distance transmission. The iTN8601-OTM4 supports 3R functions for excellent service signal transmission. The carrier grade unit comes with multiple power supply redundancy options including dual AC, dual DC or AC + DC. The units are simple to install and maintain, contributing to a low TCO.



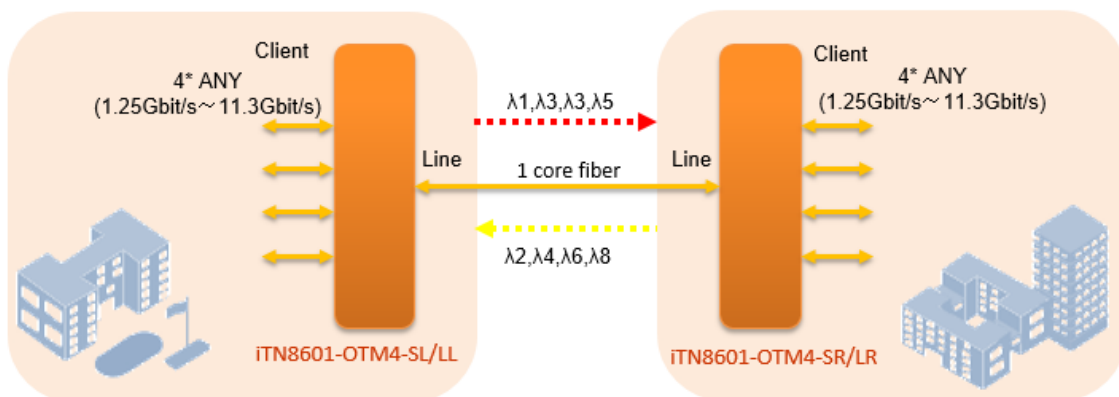
iTN8601-OTM4

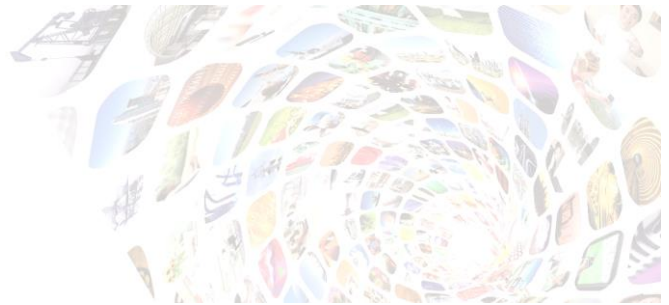
Features

- Support 4-way service signals multiplex transmission
- The service signals rate: 1.25Gbit/s~11.3Gbit/s, 1000BASE-X, 10GBASE-LAN, 10GBASE-WAN, STM-16, STM-64, CPRI-3/4/5/6/7/8, FC-2/4/8/10, OTU1, OTU2, OTU2e
- 3R (Re-amplifying Re-shaping Re-timing) function;
- The line side optical port supports ALS (Automatic Laser Shutdown) function
- Failover function, can achieve the line side → client side, the client side → the client side (the end device) failover
- Power supply redundancy options include dual AC, dual DC, AC + DC mode
- Support device management via NView



Typical Application





Parameters

Items	Parameters
Chassis	1U,19"
Chassis size	440mm (Width) *266mm (depth) *44.45mm (height)
Client side	4* Any(1.25Gbit/s ~ 11.3Gbit/s) , 1000BASE-X、 10GBASE-LAN、 10GBASE-WAN、 STM-16、 STM-64、 CPRI-3/4/5/6/7/8、 FC-2/4/8/10、 OTU1、 OTU2、 OTU2e;
Line side	1 core fiber
Transmission distance	Short distance and Long distance
Power Supply	Dual-AC , Dual-DC, AC+DC, Single AC ,Single DC
Operating Temperature	-5~ 55°C
Storage temperature	-25~ 65°C
Working Humidity	10% ~ 90%
Storage Humidity	5% ~ 95%
Interface type	LC/UPC

Ordering Information

iTN8601-OTM4-SL-XX	1U,19", 4*Any services (1.25Gbit/s ~ 11.3Gbit/s) ,Line side only 1 core fiber ,power supply redundancy; Maximum allowed link loss 9dB.
iTN8601-OTM4-SR-XX	1U,19", 4*Any services (1.25Gbit/s ~ 11.3Gbit/s) ,Line side only 1 core fiber ,power supply redundancy; Maximum allowed link loss 9dB.
iTN8601-OTM4-LL-XX	1U,19", 4*Any services (1.25Gbit/s ~ 11.3Gbit/s) ,Line side only 1 core fiber ,power supply redundancy; Maximum allowed link loss 17dB.
iTN8601-OTM4-LR-XX	1U,19", 4*Any services (1.25Gbit/s ~ 11.3Gbit/s) ,Line side only 1 core fiber ,power supply redundancy; Maximum allowed link loss 17dB.

Note1 : XX=power supply type, AC/D, DC/D, AC/DC, AC/S, DC/S;

Note2: SL and SR(LL and LR) paired to use.