



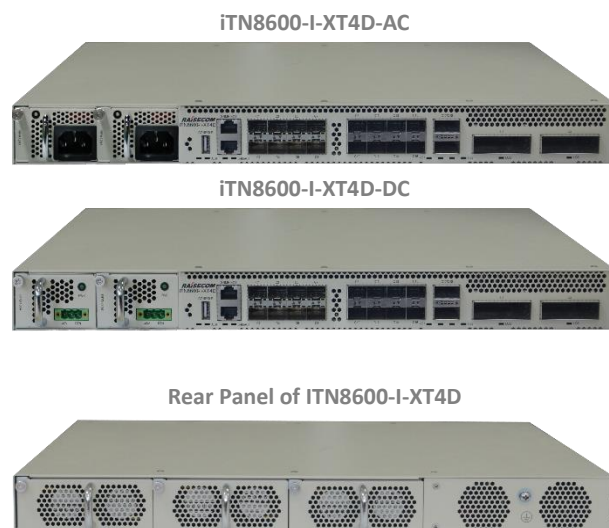
## iTN8600-I-XT4D

Raisecom iTN8600-I 100G/200G OTN Transponder/Muxponder is high density 1U height dual 100G/200G OTN hybrid Transponder/Muxponder.

On line side, it has two CFP2 ports, which can be 1×200G or 2×100G. On client side, it has sixteen SFPs and two QSFP28, which can be support 10G,40G and 100G. Client port also support 8/10/16/32GFC service.

With the brand new hybrid dual core technologies, this unit has successfully included 24 applications Including Transponder only, Muxponder only, and mixed Transponder/Muxponder. iTN8600-I can be easily configured to 24 applications by software, and the network architecture designer could easily change the network topology after purchasing the unit. The unit provide you full rich brainstorm options on building and extending your 100G networks. It is fully compliant with ITU-T recommendations, such as ITU-T G709, G.798 etc. With OTN standard GCC management, this unit has remote management ability. It is suitable for Data Center Interconnection, Metro 100G Access, and Metro Aggregation Optical Transport Networks.

200G capacity may not increase your cost a lot comparing with a single 100G unit. With the mixed mode, for example 1x 100G Transponder plus 10x10G to 100G Muxponder in one unit, you are having two applications which equals 2 different units in the past age.



## Highlights >>

- Implement 40×100G OTN in cooperation with other OTN devices, such as the iTN8600.
- Support FEC and soft-decision FEC. Support 80-km, 1200-km, and 2400-km applications when using CFP2-DCO on line side.
- Support accessing multiple types of services and flexibly scheduling and forwarding these services.
  - The line side supports the CFP2 optical module to transmit 2 channels of 100 Gbit/s OTU4 services or 1 channel 200Gbit/s service.
  - The client side supports 100GE/OTU4/40GE/10GE services, STM-64/OC-192 services, OTU2/OTU2e services, and 8G/10G/16G/32G FC services accessed by the QSFP28/QSFP+/SFP28/SFP+ optical module.
  - The OTN cross-connect capacity is 400 Gbit/s.
- Support encrypted transmission on the client side and line side.
- Support G.HAO.
- The iTN8600-I or iTN8600-A and iTN/RAX series remote devices support uniform network management.
- The iTN8600-I-XT4D supports the following access modes:

– Client-side 20×10G ANY	<->	line-side 2×OTU4, supporting ODU0/1/2/2e/flex mapping aggregation
– Client-side 20×OTU2	<->	line-side 2×OTU4, supporting ODU0/1/2/2e/flex mapping aggregation
– Client-side 12×16G FC	<->	line-side 2×OTU4
– Client-side 2×100GE	<->	line-side 2×OTU4

### International Headquarters

Raisecom Building, East-11, No.10 Xibeiwang East Road,  
Haidian District, Beijing, P.R.China, 100193  
Tel: +86 10 8288 3305  
Fax: +86 10 8288 3056  
[www.raisecom.com](http://www.raisecom.com)

### U.S.A. Headquarters

Address: 6380 N Eldridge Parkway Houston Texas  
77401 USA  
Tel: 1-888-816-4808  
Email: [sales@raisecominc.com](mailto:sales@raisecominc.com)

### Raisecom Technology Co., Ltd.

Copyright©1999-2020  
All rights reserved  
Technical information is subjected to  
change without notice



- |                                     |     |                  |
|-------------------------------------|-----|------------------|
| – Client-side 2×OTU4                | <-> | line-side 2×OTU4 |
| – Client-side 12×10G ANY + 2×40GE   | <-> | line-side 2×OTU4 |
| – Client-side 6×32G FC              | <-> | line-side 2×OTU4 |
| – Client-side 8×10G ANY + 12×OTU2   | <-> | line-side 2×OTU4 |
| – Client-side 10×10G ANY + 6×16GFC  | <-> | line-side 2×OTU4 |
| – Client-side 10×10G OTU2 + 6×16GFC | <-> | line-side 2×OTU4 |
| – Client-side 6×16GFC + 2×40GE      | <-> | line-side 2×OTU4 |
| – Client-side 16×10G ANY + 1×40GE   | <-> | line-side 2×OTU4 |
| – Client-side 10×10G ANY + 1×100GE  | <-> | line-side 2×OTU4 |
| – Client-side 10×10G ANY + 1×OTU4   | <-> | line-side 2×OTU4 |
| – Client-side 10×OTU2 + 1×100GE     | <-> | line-side 2×OTU4 |
| – Client-side 10×OTU2 + 1×OTU4      | <-> | line-side 2×OTU4 |

Note: all mode can support 200G mode on line side, only using line port 1.

## Applications >>

### Point-to-point long-distance transmission

This application provides high-bandwidth users, such as the Data Center, with an optical transmission solution of high bandwidth and short/long distance, supports the 40×100G/200G hybrid transmission system, and supports the transmission distance of up to 2400 km. For 200G mode, it can be 1200km.

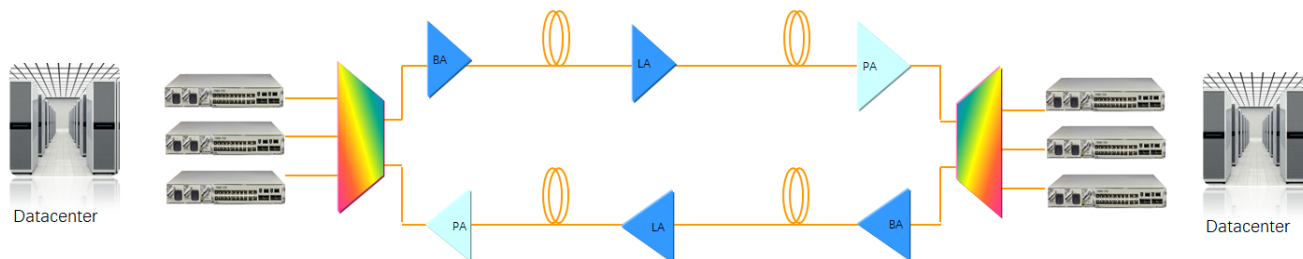


Figure 1 Point-to-point long-distance transmission

### Access-type OTN application

The iTN8600-I-XT4D, as an access-type OTN device, can be directly connected to the iTN8600 series or customer devices with services of multiple types of rates, and access and carry high-bandwidth services.

#### International Headquarters

Raisecom Building, East-11, No.10 Xibeiwang East Road,  
Haidian District, Beijing, P.R.China, 100193  
Tel: +86 10 8288 3305  
Fax: +86 10 8288 3056  
[www.raisecom.com](http://www.raisecom.com)

#### U.S.A. Headquarters

Address: 6380 N Eldridge Parkway Houston Texas  
77401 USA  
Tel: 1-888-816-4808  
Email: [sales@raisecominc.com](mailto:sales@raisecominc.com)

#### Raisecom Technology Co., Ltd.

Copyright@1999-2020  
All rights reserved  
Technical information is subjected to  
change without notice

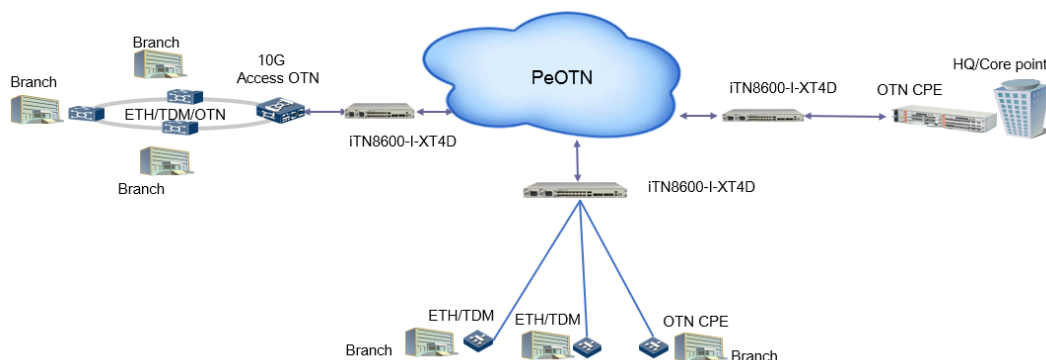


Figure 2 Access-type OTN application

## 100G comprehensive service bearer network

The iTN8600-I-XT4D, as a comprehensive service bearer device, forms a 100G CN, with N\*10G access rings connected downstream. It and these rings form the industry bearer network.

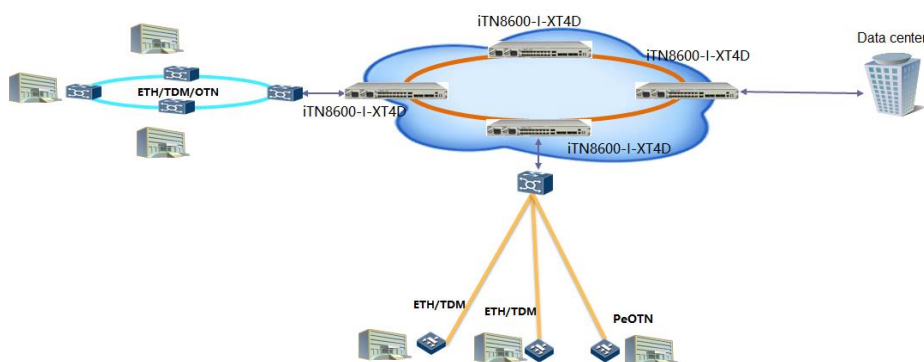


Figure 3 100G comprehensive service bearer network

## Key features >>

Line-side optical module	100G/200G CFP2, using the CFP2_DCO service interface, compatible with CFP2 OTU4 LR4 (preferential)/ER4
Client-side optical module	<ul style="list-style-type: none"> <li>● SFP+</li> <li>● SFP28</li> <li>● QSFP</li> <li>● QSFP28</li> </ul>
Line rate	OTU4, 2xOTU4
Service types	10GE, STM64, OTU2/2e, 8/10/16/32G FC, 40GE, 100GE, and OTU4
Protection type	<ul style="list-style-type: none"> <li>● Line-side interface OCH 1+1 protection</li> <li>● ODUk SNCP (/I/N/S)</li> <li>● ODUk SNCP/OCH 1+1 on both the client-side OTN interface and line-side OTN interface</li> <li>● Client-side interface protection (10GE, STM64, FC8G, FC10G, FC16G, 40GE, and 100GE)</li> <li>● Protection switching time: &lt; 50ms</li> </ul>

### International Headquarters

Raisecom Building, East-11, No.10 Xibeiwang East Road,  
Haidian District, Beijing, P.R.China, 100193  
Tel: +86 10 8288 3305  
Fax: +86 10 8288 3056  
www.raisecom.com

### U.S.A. Headquarters

Address: 6380 N Eldridge Parkway Houston Texas  
77401 USA  
Tel: 1-888-816-4808  
Email: sales@raisecominc.com

### Raisecom Technology Co., Ltd.

Copyright@1999-2020  
All rights reserved  
Technical information is subjected to  
change without notice



## Specifications >>

Dimensions (mm)	440×360×45 (Width × Depth × Height)
Weight(kg)	<7.2
Overall power consumption(W)	< 150
Power supply specifications	DC: -48V DC, -40~-57V DC; AC: 110/220V AC,100~240VAC
Operating conditions	Operating temperature: <ul style="list-style-type: none"><li>● Normal: -5 to 50°C</li><li>● ER4 QSFP28 module: -5 to 45°C</li></ul> Operating humidity: <ul style="list-style-type: none"><li>● 10%–90% (non-condensing)</li></ul>

## Standards and protocols >>

- ITU-T G.709
- ITU-T G.798

## Ordering information>>

iTN8600-I-XT4D-DC	1U 100G/200G OTN Muxponder/Transponder, dual DC power supply
iTN8600-I-XT4D-AC	1U 100G/200G OTN Muxponder/Transponder, dual AC power supply
RPA1241-220S12	AC power Module for iTN8600-I-XT4D-AC,110/220V AC
RPD1304-48S12	DC power Module for iTN8600-I-XT4D-DC,-48V DC
FANS383	Fan Module for iTN8600-I-XT4D.

### International Headquarters

Raisecom Building, East-11, No.10 Xibeiwang East Road,  
Haidian District, Beijing, P.R.China, 100193  
Tel: +86 10 8288 3305  
Fax: +86 10 8288 3056  
[www.raisecom.com](http://www.raisecom.com)

### U.S.A. Headquarters

Address: 6380 N Eldridge Parkway Houston Texas  
77401 USA  
Tel: 1-888-816-4808  
Email: [sales@raisecominc.com](mailto:sales@raisecominc.com)

### Raisecom Technology Co., Ltd.

Copyright@1999-2020  
All rights reserved  
Technical information is subjected to  
change without notice