

OPCOM100 Series CWDM/DWDM Filters

OPCOM100 Series CWDM/DWDM Filters are passive Mux/Demux and Add/Drop device which are produced by Raisecom. Optical signals with CWDM/DWDM channel wavelength can be multiplexed into a fiber to transfer by the product, and the products can realize demultiplexing as reversibility of CWDM/DWDM components. Line and fiber resource can be saved and optical cables don't need to be layed again and also to save cost. The products have many advantages, such as plug and play, small size, easy installation, low insertion loss, high isolation. It realizes 1:N expansion of cables and doesn't affect transmission performance of old dual-fiber system. It is passive, so operators realize "zero operation and maintenance".



OPCOM100-OMU6/8/12 (CWDM)

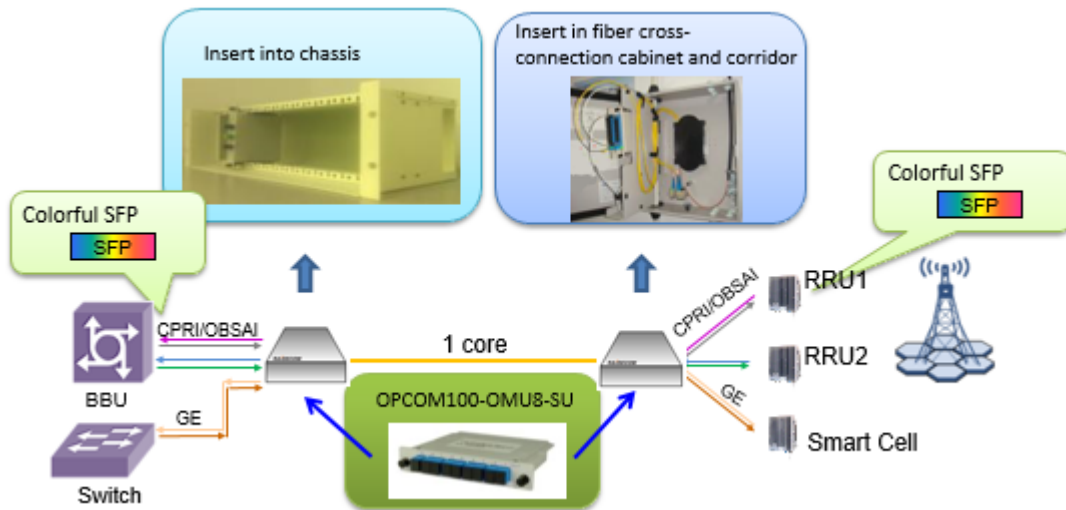


OPCOM100-OMU18-LU (CWDM)

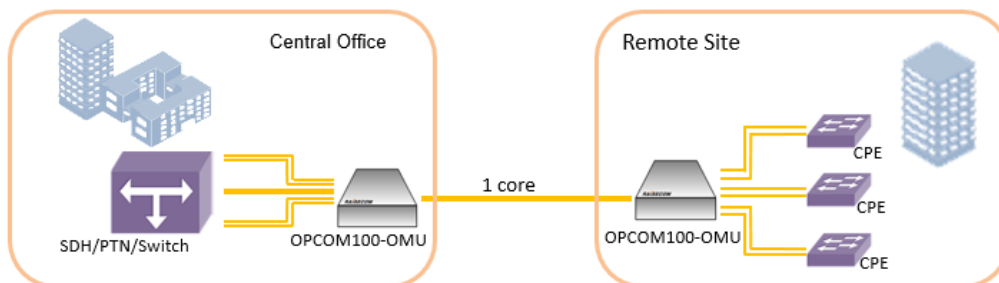


OPCOM100-DMU40 (DWDM)

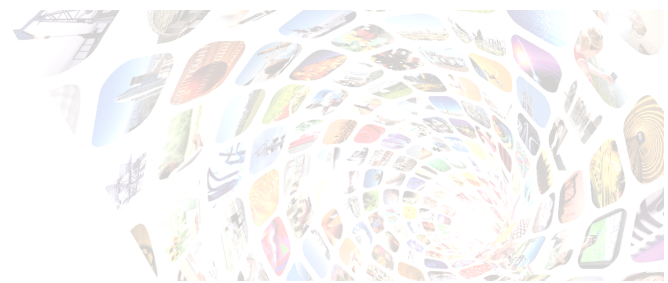
Typical Application



Scenario 1: Mobile Fronthaul and Smart Cell access solution



Scenario 2: Enterprise Multi-Services access solution



Wavelengths

CWDM 18 channels																			
Type	Part No.	1271	1291	1311	1331	1351	1371	1391	1411	1431	1451	1471	1491	1511	1531	1551	1571	1591	1611
Mux/DeMux	OPCOM100-OMU18-LU	18CH																	
	OPCOM100-OMU12-LU	6CH						6CH											
	OPCOM100-OMU8-SU													8CH					
	OPCOM100-OMU6-SU(REV.A)	6CH																	
	OPCOM100-OMU6-SU(REV.B)	6CH						EXT 8CH											
	OPCOM100-OMU6-LU	6CH																	
OADM	OPCOM100-OMU6-LU-1	2CH																	
	OPCOM100-OMU6-LU-2					2CH													
	OPCOM100-OMU6-LU-3					2CH													
	OPCOM100-OMU6-LU-4											2CH							
	OPCOM100-OMU6-LU-5															2CH			
	OPCOM100-OMU6-LU-6																	2CH	
DWDM 40 channels																			
Type	Part No.	C21~C60, 1560.61nm~1529.55nm, 100Ghz																	
Mux/DeMux	OPCOM100-DMU40	40CH																	

Parameters

Dimensions	OPCOM100-OMU6/8/12	130(H)*25(W)*100(D) mm
	OPCOM100-OMU18-LU	130(H)*50(W)*100(D) mm
	OPCOM100-DMU40	1U, 19 inch.
Optical connector	OPCOM100-OMU8-SU, OPCOM100-OMU6-SU	SC/UPC
	OPCOM100-OMU6-LU/OMU6-XX-LU/OMU12-LU/OMU18-LU	LC/UPC
	OPCOM100-DMU40	LC/UPC
Insertion loss	OPCOM100-OMU6-SU(A)	< 2.6dB
	OPCOM100-OMU6-SU(B)	< 3.2dB
	OPCOM100-OMU6-LU	< 2.1dB
	OPCOM100-OMU6-LU-x	<1.2dB
	OPCOM100-OMU8-SU(A)	<3dB
	OPCOM100-OMU8-SU(B)	<3.5dB
	OPCOM100-OMU12-LU(B)	<2.6dB
	OPCOM100-OMU18-LU	<3.5dB
	OPCOM100-DMU40(A.01)	<4dB
Transmission media	Single mode fiber	



Working temperature	OPCOM100-OMU6-SU(A),OPCOM100-OMU6-LU/OMU6-X-LU,OPCOM100-OMU8-SU(A),OPCOM100-OMU12-LU,OPCOM100-OMU18-LU	-10 ~ 65 Celsius
	OPCOM100-OMU6-SU(B) OPCOM100-OMU8-SU(B)	-40 ~ 85 Celsius
	OPCOM100-DMU40	-10 ~ 70 Celsius
Storage temperature	-40 ~ 85 Celsius	
Relative humidity	5 ~ 95% non condensing	

Ordering Information

OPCOM100-OMU6-SU(A)	Passive 6-channel CWDM MUX/DE-MUX (1271nm, 1291nm, 1311nm, 1331nm, 1351nm, 1371nm); optical interface is SC/UPC, plastic insertion box encapsulation, and it can be inserted into PB16/PB3 passive chassis; Commercial. Working temperature:-10 ~ 65 Celsius
OPCOM100-OMU6-SU(B)	Passive 6-channel CWDM MUX/DE-MUX (1271nm, 1291nm, 1311nm, 1331nm, 1351nm, 1371nm); optical interface is SC/UPC, plastic insertion box encapsulation, and it can be inserted into PB16/PB3 passive chassis; Industrial. Working temperature:-40 ~ 85 Celsius; Support extended interface;
OPCOM100-OMU6-LU	Passive 6-channel CWDM MUX/DE-MUX (1271nm, 1291nm, 1311nm, 1331nm, 1351nm, 1371nm); optical interface is LC/UPC, plastic insertion box encapsulation, and it can be inserted into PB16/PB3 passive chassis;
OPCOM100-OMU6-LU-X	Two-Channel CWDM Wavelength add/drop device, X=1~6, 1=1271nm, 1291nm; 2=1311nm, 1331nm; 3=1351nm, 1371nm; 4=1471nm, 1491nm; 5=1511nm, 1531nm; 6=1551nm, 1571nm. Optical interface is LC/UPC, plastic insertion box encapsulation, and it can be inserted into PB16/PB3 passive chassis;
OPCOM100-OMU8-SU(A)	Passive 8-channel CWDM MUX/DE-MUX (1471nm, 1491nm, 1511nm, 1531nm, 1551nm, 1571nm, 1591nm, 1611nm); optical interface is SC/UPC, plastic insertion box encapsulation, and it can be inserted into PB16/PB3 passive chassis; Commercial. Working temperature:-10 ~ 65 Celsius
OPCOM100-OMU8-SU(B)	Passive 8-channel CWDM MUX/DE-MUX (1471nm, 1491nm, 1511nm, 1531nm, 1551nm, 1571nm, 1591nm, 1611nm); optical interface is SC/UPC, plastic insertion box encapsulation, and it can be inserted into PB16/PB3 passive chassis; Industrial. Working temperature:-40 ~ 85 Celsius
OPCOM100-OMU12-LU	Passive 12-channel CWDM MUX/DE-MUX (1271nm, 1291nm, 1311nm, 1331nm,1351nm,1371nm,1471nm, 1491nm, 1511nm, 1531nm, 1551nm, 1571nm); optical interface is LC/UPC, plastic insertion box encapsulation, and it can be inserted into PB16/PB3 passive chassis;
OPCOM100-OMU18-LU	Passive 18-channel CWDM MUX/DE-MUX (1271nm, 1291nm, 1311nm, 1331nm,1351nm,1371nm, 1391nm,1411nm,1431nm,1451nm,1471nm, 1491nm, 1511nm, 1531nm, 1551nm, 1571nm , 1591nm, 1611nm); optical interface is LC/UPC, plastic insertion box encapsulation, and it can be inserted into PB16 passive chassis;
OPCOM100-DMU40	40-Channel DWDM MUX/DEMUX device on dual-strand fiber, colored wavelength from C21 to C60 (1520.55nm to1560.61nm with a spacing of 0.8nm) Optical interface: LC/UPC;