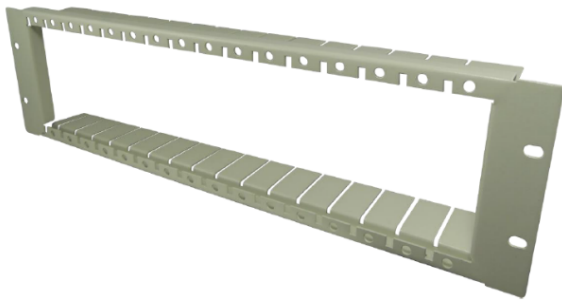
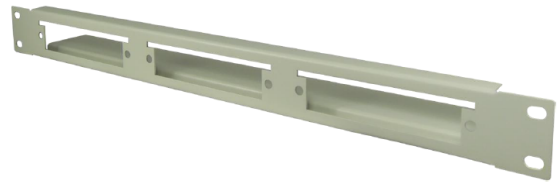




## OPCOM100 Series Chassis



PB16 Chassis (3U ,16 Slots)



PB3 Chassis (1U ,3 Slots)

### Parameters

Dimensions	PB16 Chassis : 3U, 19 inch; 483(W)mm × 60(D)mm × 131(H)mm; PB3 Chassis : 1U ,19inch; 483(W)mm × 60(D)mm × 44(H)mm;
weight	PB16 Chassis : 0.3kg; PB3 Chassis : 0.25kg;

### Ordering Information

PB16	Passive plug-in encapsulation box 16-slot 3U panel, 3U, 19 inch; 483(W)mm × 60(D)mm × 131(H)mm ;
PB3	Passive plug-in encapsulation box 3-slot 1U panel ,1U ,19inch; 483(W)mm × 60(D)mm × 44(H)mm;