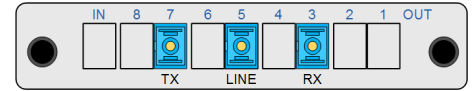
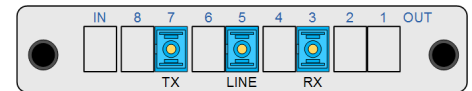


## OPCOM100-PSDU-A/B/C-SU

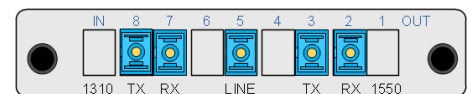
OPCOM100-PSDU-A-SU, OPCOM100-PSDU-B-SU, OPCOM100-PSDU-C-SU are Raisecom enhanced passive single/dual-fiber converter which is realized by WDM product. The products use optical circulator technology which is different from other common WDM technology. Users can use the product to transform 1310/1550 wavelength dual-fiber bi-directional point-to-point transmission system as single-fiber bi-directional transmission. Line and fiber resource can be saved and optical cables don't need to be layed again and again to save cost by using PSDU products. And PSDU products are also applied in emergency communication if optical cables fail.



OPCOM100-PSDU-A-SU(1310nm)

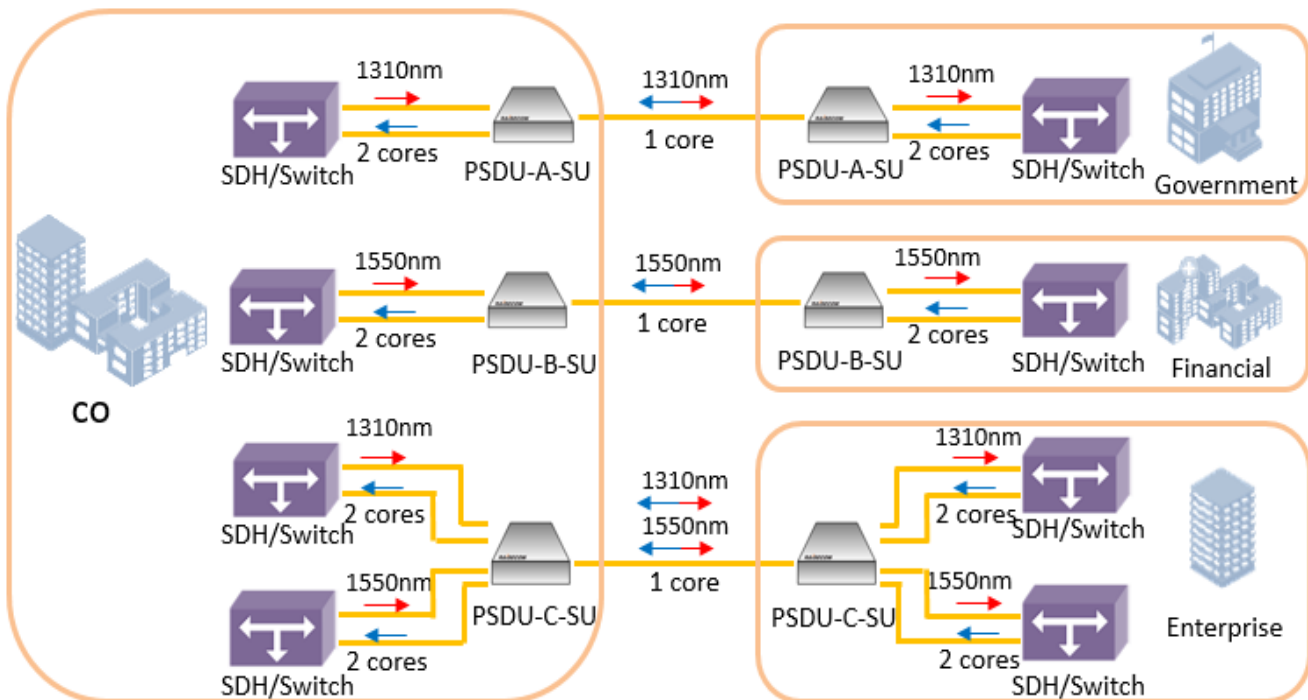


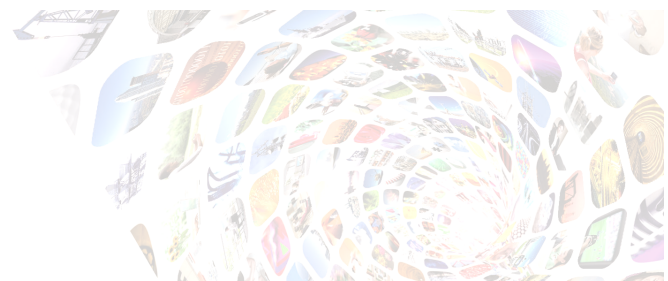
OPCOM100-PSDU-B-SU(1550nm)



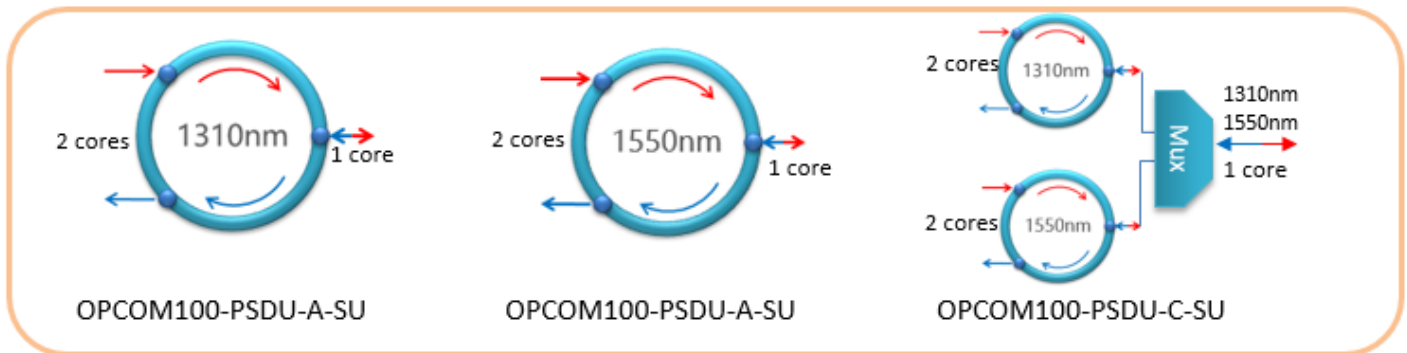
OPCOM100-PSDU-C-SU(1310nm+1550nm)

### Typical Application





## Functional Diagram



## Parameters

<b>Dimensions</b>	130(H)*25(W)*100(D) mm
<b>Optical connector</b>	OPCOM100-PSDU-A/B-SU (Rev. C)SC/UPC optical port on client side, SC/APC optical port on line side OPCOM100-PSDU-A/B-SU (Rev.D)SC/UPC optical port on client side, SC/UPC optical port on line side OPCOM100-PSDU-C-SU (Rev.A)SC/UPC optical port on client side, SC/UPC optical port on line side
<b>Insertion loss</b>	OPCOM100-PSDU-A/B-SU: <1.3 dB; OPCOM100-PSDU-C-SU: < 1.9 dB;
<b>Transmission media</b>	Single mode fiber
<b>Working temperature</b>	-10 ~ 65 Celsius
<b>Storage temperature</b>	-40 ~ 75 Celsius
<b>Relative humidity</b>	5 ~ 95% non condensing

## Ordering Information

<b>OPCOM100-PSDU-A-SU(D)</b>	1310nm band passive insertion single/dual-fiber converter, SC/UPC optical interface on client side, SC/UPC optical interface on line side, plastic insertion box encapsulation, and it can be inserted into PB16/PB3 passive chassis;
<b>OPCOM100-PSDU-B-SU(D)</b>	1550nm band passive insertion single/dual-fiber converter, SC/UPC optical interface on client side, SC/UPC optical interface on line side, plastic insertion box encapsulation, and it can be inserted into PB16/PB3 passive chassis;
<b>OPCOM100-PSDU-C-SU</b>	1310nm+1550nm band passive insertion single/dual-fiber converter, SC/UPC optical interface on client side, SC/UPC optical interface on line side, plastic insertion box encapsulation, and it can be inserted into PB16/PB3 passive chassis;