



Gazelle S1020i-PWH-GL

The Gazelle S1020i-PWH-GL is an industrial PoE switch designed to meet various industrial communication requirements. It can work stably for a long time in harsh environments.

The Gazelle S1020i-PWH-GL provides 2 optical interfaces and 4 electrical interfaces, or 4 optical interfaces and eight 100/1000 Mbit/s auto-negotiation Ethernet interfaces. Complying with IEEE 802.3af/at/bt, it supports outputting up to 90 W power per interface.

The Gazelle S1020i-PWH-GL features good adaptability in industrial environments (including mechanical stability, atmosphere environment adaptability, electromagnetic environment adaptability), and IP40 protection class. It supports dual power supply redundancy, digital input, and low-consumption fanless heat dissipation. It provides a 3-year warranty. Besides the electric power field, it can be widely applied to land transportation, sea transportation, coal, petroleum, metallurgy, and water treatment.

Gazelle S1020i-PWH-GL



Highlights

- Provide 2 optical interfaces and 4 electrical interfaces, or 4 optical interfaces and eight 100/1000 Mbit/s auto-negotiation Ethernet interfaces.
- Guide-rail chassis, fanless heat dissipation, IP40 protection class
- All electrical interfaces comply with IEEE 802.3bt standard (compatible with IEEE 802.3af and IEEE 802.3at) PoE, with up to 90 W per interface.
- Provide 2 digital input interfaces.
- Support restoring default configurations by pressing the RESET button.
- Support dual power supply input with the voltage range of 44-57 VDC.
- Support the operating temperature of -40 to 75 °C and storage temperature of -40 to 85 °C.

Application>>

International Headquarters

Raisecom Building, East-11, No.10 Xibeiwang East Road,
Haidian District, Beijing, P.R.China, 100193
Tel: +86 10 8288 3305
Fax: +86 10 8288 3056
www.raisecom.com

U.S.A. Headquarters

Address: 3031 N. Rocky Point Drive West Suite 100
Tampa, Florida 33607 USA
Tel: 1-888-816-4808
Email: sales@raisecominc.com

Raisecom Technology Co., Ltd.

Copyright@1999-2018
All rights reserved
Technical information is subjected to
change without notice

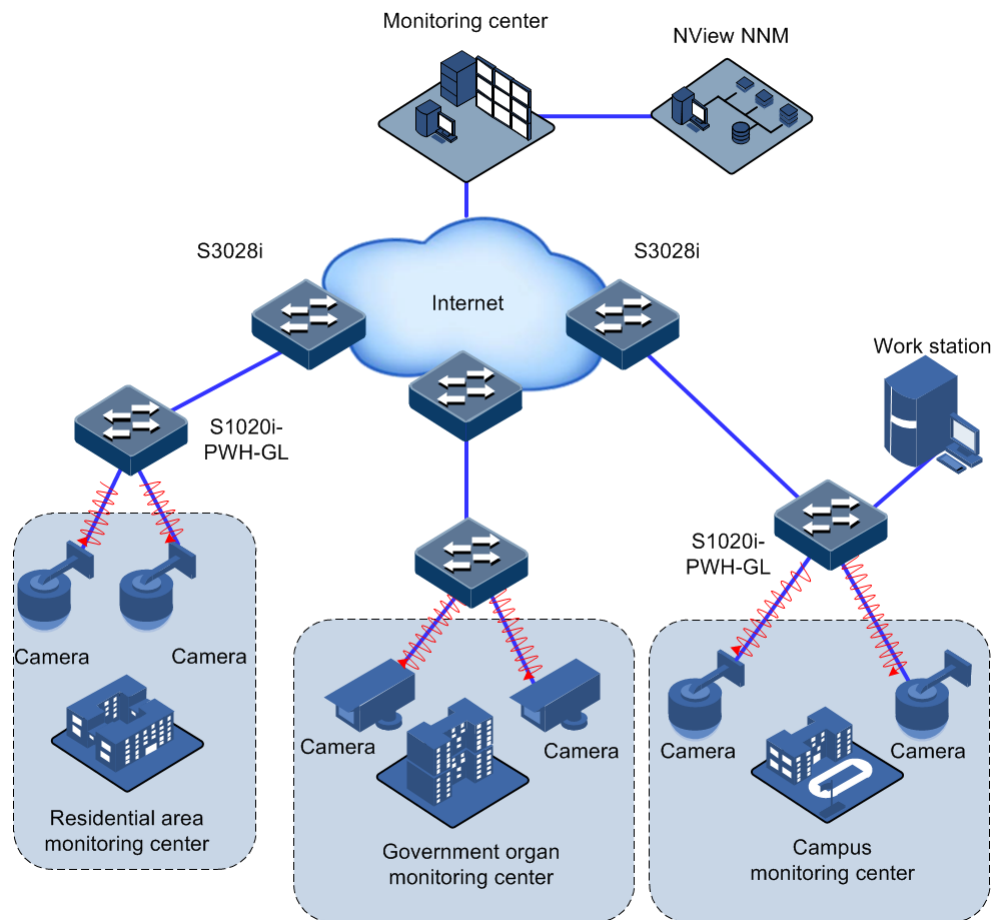


Figure 1 Video monitoring for Safe City project

Video monitoring for Safe City project

The Gazelle S1020i-PWH-GL, as the PoE switch, provides power and transmits data through PoE for PDs, such as cameras and wireless APs.

Features>>

Product description	<p>Gazelle S1020i-2GF-4GE-PWH-GL-DC48</p> <ul style="list-style-type: none"> ● Two 100/1000 Mbit/s auto-negotiation SFP optical interfaces and four 10/100/1000 Mbit/s Ethernet electrical interfaces ● All electrical interfaces comply with IEEE 802.3bt standard (compatible with IEEE 802.3af and IEEE 802.3at) PoE, with up to 90 W per interface. ● The entire device provides up to 180 W PoE power. ● 2 DI interfaces ● Dual DC power input (44–57 VDC) ● Fanless design and IP40 protection class <p>Gazelle S1020i-4GF-8GE-PWH-GL-DC48</p>
---------------------	--

International Headquarters

Raisecom Building, East-11, No.10 Xibeiwang East Road,
Haidian District, Beijing, P.R.China, 100193
Tel: +86 10 8288 3305
Fax: +86 10 8288 3056
www.raisecom.com

U.S.A. Headquarters

Address: 3031 N. Rocky Point Drive West Suite 100
Tampa, Florida 33607 USA
Tel: 1-888-816-4808
Email: sales@raisecominc.com

Raisecom Technology Co., Ltd.

Copyright@1999-2018
All rights reserved
Technical information is subjected to
change without notice



	<ul style="list-style-type: none">● Four 100/1000 Mbit/s auto-negotiation SFP optical interfaces and eight 10/100/1000 Mbit/s Ethernet electrical interfaces● All electrical interfaces comply with IEEE 802.3bt standard (compatible with IEEE 802.3af and IEEE 802.3at) PoE, with up to 90 W per interface.● The entire device provides up to 360 W PoE power.● 2 DI interfaces● Dual DC power input (44–57 VDC)● Fanless design and IP40 protection class
Interface	<ul style="list-style-type: none">● GF: 100/1000 Mbit/s auto-negotiation SFP optical interface● GE: 10/100/1000 Mbit/s Ethernet electrical interface
Ring network protection	<ul style="list-style-type: none">● ERPS (G.8032)● STP/RSTP/MSTP/MRSTP● BPDU guard and root guard● Loop detection protection
Reliability	<ul style="list-style-type: none">● Manual aggregation and static LACP● Interface backup● ELPS (G.8031)● ERPS (G.8032)● Loop detection protection
IPv6	<ul style="list-style-type: none">● IPv6 Ping, IPv6 Tracert, IPv6 Telnet, and IPv6 FTP/TFTP/SFTP● IPv6 SNMP and Raisecom IPv6 NView NNM system (network management)● IPv6 RADIUS, IPv6 TACACS+, IPv6 NTP, and SNTP● IPv6 ACL
Multicast	<ul style="list-style-type: none">● IGMP v1/v2/v3 Snooping and immediate leave● Immediate leave based on interface or user● Static multicast group● MLD Snooping v1/v2
QoS/ACL	<ul style="list-style-type: none">● Rate limiting in the ingress and/or egress direction of interfaces● Each port supports 8 queues.● SP, WRR, DRR, SP+WRR, and SP+DRR scheduling modes● Packet redirection● Remarking 802.1p and DSCP priority of packets● Traffic policing based on interface and dual-rate three-color CAR● L2–L4 packet filtering based on SMAC, DMAC, SIP, DIP, TCP/UDP source/destination port number, protocol, or VLAN
Security	<ul style="list-style-type: none">● Hierarchical user management and password protection● 802.1x authentication based on interface or MAC address● CPU protection and anti-ARP protection● Binding with combinations of IP address, MAC address, interface, and VLAN● Blackhole MAC address● MAC address limit

International Headquarters

Raisecom Building, East-11, No.10 Xibeiwang East Road,
Haidian District, Beijing, P.R.China, 100193
Tel: +86 10 8288 3305
Fax: +86 10 8288 3056
www.raisecom.com

U.S.A. Headquarters

Address: 3031 N. Rocky Point Drive West Suite 100
Tampa, Florida 33607 USA
Tel: 1-888-816-4808
Email: sales@raisecominc.com

Raisecom Technology Co., Ltd.

Copyright@1999-2018
All rights reserved
Technical information is subjected to
change without notice



	<ul style="list-style-type: none"> ● AAA accounting, including RADIUS and TACACS+ accounting ● Interface isolation ● Port security MAC ● SSH V2.0 ● SFTP ● HTTPS ● DHCP Snooping for preventing spoofing DHCP servers ● Dynamic ARP inspection, man-in-the-middle attack, ARP DOS ● BPDU guard and Root guard
Management and maintenance	<ul style="list-style-type: none"> ● Console interface and out-of-band interface management ● SNMPv1/v2c/v3, CLI, Web, Telnet, and SSH2.0 management modes ● Raisecom NView NNM system ● RMON ● LLDP/LLDP-MED ● System log and hierarchical alarms ● Ping and Tracert ● Dying gasp alarm ● NTP and SNTP ● Virtual cable test ● Interface loopback ● Zero-configuration, namely, automatically downloading configurations and upgrading software from the DHCP server ● Loop detection on interfaces ● Optical module DDM ● Link-state tracking ● DLDP ● Dual systems
POE	<ul style="list-style-type: none"> ● IEEE 802.3af, IEEE 802.3at, and IEEE802.3bt power supply, with up to 90 W power supplied per interface ● Forcible power supply for non-standard PDs ● PoE management, including enabling/disabling power supply for interfaces, configuring interface output power, configuring power supply priority, power overload protection, and overtemperature protection ● Timed PoE power supply, periodically restarting PDs, monitoring PD connection status and restarting PDs upon PD disconnection
MTBF	> 35 years
Specifications>>	
Dimensions	<ul style="list-style-type: none"> ● Gazelle S1020i-2GF-4GE-PWH-GL: 80 mm (Width) × 130 mm (Height) × 150 mm (Depth) ● Gazelle S1020i-4GF-8GE-PWH-GL: 98 mm (Width) × 155 mm (Height) × 177 mm (Depth)

International Headquarters

Raisecom Building, East-11, No.10 Xibeiwang East Road,
Haidian District, Beijing, P.R.China, 100193
Tel: +86 10 8288 3305
Fax: +86 10 8288 3056
www.raisecom.com

U.S.A. Headquarters

Address: 3031 N. Rocky Point Drive West Suite 100
Tampa, Florida 33607 USA
Tel: 1-888-816-4808
Email: sales@raisecominc.com

Raisecom Technology Co., Ltd.

Copyright@1999-2018
All rights reserved
Technical information is subjected to
change without notice



Weight	<ul style="list-style-type: none"> ● Gazelle S1020i-2GF-4GE-PWH-GL: 0.9 kg ● Gazelle S1020i-4GF-8GE-PWH-GL: 1.5 kg
Power supply	<p>Input voltage:</p> <ul style="list-style-type: none"> ● 44–57 VDC (IEEE 802.1af) ● 50–57 VDC (IEEE 802.1at) ● 52–57 VDC (IEEE 802.1bt)
Operating environment	<ul style="list-style-type: none"> ● Operating temperature: -40 to 75 °C ● Storage temperature: -40 to 85 °C ● Humidity: 5%–90% (non-condensing)
Maximum power consumption	<ul style="list-style-type: none"> ● Gazelle S1020i-2GF-4GE-PWH-GL ● System power consumption: ≤ 200 W ● PoE output power: ≤ 180 W ● Gazelle S1020i-4GF-8GE-PWH-GL ● System power consumption: ≤ 380 W ● PoE output power: ≤ 360 W

Standards and protocols>>		IEC61000-4-3 (RS-): 10V/m (80–1000 MHz)
Standards and protocols	<p>IEEE 802.3</p> <p>IEEE 802.3af/at/bt</p> <p>IEEE 802.3u for 100BaseT(X) and 100Base FX</p> <p>IEEE 802.3z for 1000BaseSX/LX/LHX/ZX</p> <p>IEEE 802.3x for Flow Control</p> <p>IEEE 802.1D for Spanning Tree Protocol</p> <p>IEEE 802.1S for Per Vlan Spanning Tree Protocol</p> <p>IEEE 802.1W for Rapid STP</p> <p>IEEE 802.1Q for VLAN Tagging</p> <p>IEEE 802.1p for Quality of Service</p> <p>IEC61000-4-2 (ESD): ±6 kV for contact discharge and ±8 kV for air discharge</p>	<p>IEC61000-4-4 (EFT): ±2 kV for power cables and ±4 kV (5 kHz, 100 kHz) for data cables</p> <p>IEC61000-4-5 (Surge): CM±2 kV/DM±1 kV for power cables and CM±4 kV for data cables</p> <p>IEC61000-4-6 (RF conduction): 10 V (150 kHz to 80 MHz)</p> <p>IEC61000-4-8 (power frequency magnetic field): 100 A/m for lasting; 1000 A/m , 1s–3s</p> <p>IEC61000-4-9 (pulsed magnet field): 300 A/m</p> <p>IEC61000-4-10 (damped oscillation magnetic field): 30 A/m@1MHz</p> <p>IEC61000-4-12/18 (shock wave): CM 2.5 kV; DM 1kV</p> <p>FCC Part 15/CISPR22 (EN55022): Class A</p> <p>IEC61000-6-2 (common industrial standards)</p> <p>IEC60068-2-6 (anti-vibration)</p> <p>IEC60068-2-27 (anti-shock)</p> <p>IEC60068-2-32 (free fall)</p>

Ordering information>>	
<p>Gazelle S1020i-2GF-4GE-PWH-GL-DC48</p>	<ul style="list-style-type: none"> ● Two 100/1000 Mbit/s auto-negotiation SFP optical interfaces and four 10/100/1000 Mbit/s Ethernet electrical interfaces ● All electrical interfaces comply with IEEE 802.3bt standard (compatible with IEEE 802.3af and IEEE 802.3at) PoE, with up to 90 W per interface. ● The entire device provides up to 180 W PoE power. ● 2 DI interfaces

International Headquarters

Raisecom Building, East-11, No.10 Xibeiwang East Road,
Haidian District, Beijing, P.R.China, 100193
Tel: +86 10 8288 3305
Fax: +86 10 8288 3056
www.raisecom.com

U.S.A. Headquarters

Address: 3031 N. Rocky Point Drive West Suite 100
Tampa, Florida 33607 USA
Tel: 1-888-816-4808
Email: sales@raisecominc.com

Raisecom Technology Co., Ltd.

Copyright@1999-2018
All rights reserved
Technical information is subjected to
change without notice



	<ul style="list-style-type: none">● Dual DC power input (44–57 VDC)
Gazelle	<ul style="list-style-type: none">● Four 100/1000 Mbit/s auto-negotiation SFP optical interfaces and eight 10/100/1000 Mbit/s Ethernet electrical interfaces
S1020i-4GF-8GE-PWH-	<ul style="list-style-type: none">● All electrical interfaces comply with IEEE 802.3bt standard (compatible with IEEE 802.3af and IEEE 802.3at) PoE, with up to 90 W per interface.
GL-DC48	<ul style="list-style-type: none">● The entire device provides up to 360 W PoE power.● 2 DI interfaces● Dual DC power input (44–57 VDC)

International Headquarters

Raisecom Building, East-11, No.10 Xibeiwang East Road,
Haidian District, Beijing, P.R.China, 100193
Tel: +86 10 8288 3305
Fax: +86 10 8288 3056
www.raisecom.com

U.S.A. Headquarters

Address: 3031 N. Rocky Point Drive West Suite 100
Tampa, Florida 33607 USA
Tel: 1-888-816-4808
Email: sales@raisecominc.com

Raisecom Technology Co., Ltd.

Copyright@1999-2018
All rights reserved
Technical information is subjected to
change without notice