



ISCOM HT803G-U GPON home terminal

▼ Introduction

The ISCOM HT803G-U is a GPON uplink home gateway. It provides 4 GE interfaces, two FXS voice interfaces, one CATV interface, and one USB interface, and supports WLAN. It is applicable to FTTH scenarios, with appearance as below.



▼ Features

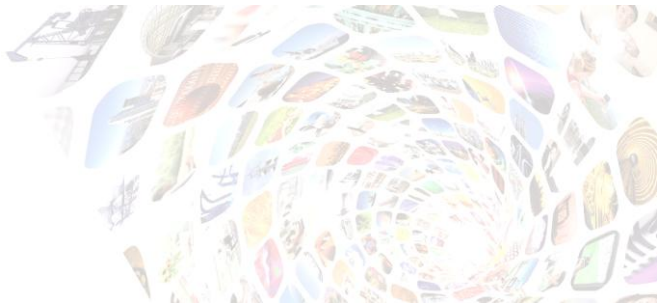
- Compliant with ITU-T G.984/G.988 and Chinese communication industry standard
- Adopt a high-performance chip in the industry, which features excellent data and service processing capabilities.
- Elegant appearance and good heat dissipation, thus applicable to homes and enterprises to provide Internet access, voice, and video services.
- User-friendly Web interface, with easy OAM, allowing you to download image programs remotely through the OLT
- Great price-performance ratio with 4 GE interfaces which provide enough bandwidth for new Internet services
- Passing carriers' internetworking test and centralized procurement test, with guarantee for internetworking with OLTs of other vendors

International Headquarters

East-11, Raisecom Building, No.10 Xibeiwang East Road,
Haidian District, Beijing. 100094, China
Tel: +86 10 8288 3305
Fax: +86 10 8288 3056
www.raisecom.com

U.S.A. Headquarters
Raisecom, Inc. – U.S. HQ, Florida
Email: sales@raisecominc.com
Tel: 1-888-816-4808
Address: 3031 North Rocky Point Drive
West Suite 100, Tampa, Florida 33607 USA

Raisecom Technology Co., Ltd.
Copyright@1999-2016
All rights reserved
Technical information is subjected to
change without notice



▼ Specifications

Hardware features	
Dimensions	174 mm (Length) × 129 mm (Width) × 38 mm (Height)
Weight	< 0.5 kg
Power consumption	≤ 18 W
Power adapter input	100–240 VAC (50/60 Hz)
Power adapter output	12 VDC, 2 A
Operating temperature	0–50 °C
Operating humidity	10%–93% (non-condensing)
Software features	
Data	<p>The ONU provides four 10/100/1000 Base-T Ethernet interfaces, with the following features:</p> <ul style="list-style-type: none"> • Ethernet auto-negotiation and auto-MDI/MDIX • IEEE 802.11b/g/n WLAN interface • Embedded with Layer 2 switching • Embedded with Layer 3 router and home gateway • Advanced data functions, such as processing VLAN Tags, traffic classification, and packet filtering • USB 2.0 Flash
Video	<ul style="list-style-type: none"> • 2 video services: video stacking and data delivering (through unicast and multicast) • IGMP Snooping. The ISCOM HT803G-U can purposely choose to send multicast data streams upon detection of a member joining and leaving the multicast group.
Voice	<ul style="list-style-type: none"> • Multiple voice coding schemes • Echo cancellation, VAD, and CNG • Static or dynamic jitter buffer • Various classified services: CID, call waiting, call forward, and call transfer • SIP (RFC3261) and H.248 (MEGACOv2) voice protocols
OAM	<ul style="list-style-type: none"> • Various services, including Ethernet, WLAN, VoIP, and RF • Alarm and performance monitoring • Mirror-downloading, activating, and restarting software remotely through the OLT • 2 software mirroring inventories, and checking software integrity

International Headquarters

East-11, Raisecom Building, No.10 Xibeiwang East Road,
Haidian District, Beijing. 100094, China
Tel: +86 10 8288 3305
Fax: +86 10 8288 3056
www.raisecom.com

U.S.A. Headquarters

Raisecom, Inc. – U.S. HQ, Florida
Email: sales@raisecominc.com
Tel: 1-888-816-4808
Address: 3031 North Rocky Point Drive
West Suite 100, Tampa, Florida 33607 USA

Raisecom Technology Co., Ltd.

Copyright@1999-2016
All rights reserved
Technical information is subjected to
change without notice



<p>IP routing and firewall</p>	<ul style="list-style-type: none"> • Multiple WAN interfaces • WAN connection <ul style="list-style-type: none"> - PPPoE - DHCP - Static configuration • DHCP Server • DHCP Relay • NAT • NAPT • Interface forwarding, static route, ALGs, UPnP, firewall, DMZ, DDNS, NTP, and IGMP Proxy
<p>Ethernet bridge</p>	<ul style="list-style-type: none"> • Wire-speed forwarding • Hardware-based priority queues support CoS in both the uplink and downlink. • IEEE 802.1q virtual switching • IEEE 802.1d bridge • Up to 2K MAC addresses and 4K VLAN groups • Up to 256 multicast groups • Adding/Removing VLAN tag to/from packets of the Ethernet interface • Mapping from IP ToS/DSCP to IEEE 802.1p • CoS based on UNI, VLAN-ID, 802.1p bit, and ToS/DSCP • IEEE 802.1p marking and remarking • IGMPv1/v2/v3 Snooping • Rate limiting on broadcast/multicast packets • MAC address limit
<p>Interface attributes</p>	
<p>GPON interface</p>	<ul style="list-style-type: none"> • Interface type (SMF): SC/APC for the PON interface • Transmission rate: 1.25 Gbit/s in the uplink and 2.5 Gbit/s in the downlink • Central wavelength: 1310 nm for Tx and 1490 nm for Rx • Tx optical power: 0-4 dBm • Maximum Rx sensitivity: -28 dBm • Overloading optical power: -8 dBm
<p>GE interface</p>	<ul style="list-style-type: none"> • 10/100/1000Base-T RJ45 Ethernet interface • Auto-negotiation or manual configuration of the Ethernet interface • Auto-MDI/MDIX

International Headquarters

East-11, Raisecom Building, No.10 Xibeiwang East Road,
Haidian District, Beijing. 100094, China
Tel: +86 10 8288 3305
Fax: +86 10 8288 3056
www.raisecom.com

U.S.A. Headquarters

Raisecom, Inc. – U.S. HQ, Florida
Email: sales@raisecominc.com
Tel: 1-888-816-4808
Address: 3031 North Rocky Point Drive
West Suite 100, Tampa, Florida 33607 USA

Raisecom Technology Co., Ltd.

Copyright@1999-2016
All rights reserved
Technical information is subjected to
change without notice



POTS interface	<ul style="list-style-type: none"> • RJ-11 interface • Balanced ringing, 55 V RMS • DTMF dialup • Multiple coding schemes <ul style="list-style-type: none"> – G.711 (μ-law and A-law) – G.729 (A and B) – G.723.1 • Echo cancellation • VAD and CNG • SIP (RFC3261) • SDP (RFC2327) • RTP (RFC3550/3551) • RFC2833 DTMP coding or SIP INFO method • Multiple classified services, CID, call waiting, call forwarding, call transfer, call switching, three-way calling, classified ringing • G.711 faxes, modem, and TTY devices • T.38 fax • Configurable dial-up plan • Configurable rings for different countries • DHCP Client and static IP address
WLAN	<ul style="list-style-type: none"> • IEEE 802.11b/g/n • 2.4 GHz • MIMO: 2\times2 • Multiple SSIDs • 64-bit and 128-bit WEP • WPA and WPA-PSK • WPS for WiFi switching
CATV interface	<ul style="list-style-type: none"> • Optical connector form: SC/APC • Range of the CATV Rx wavelength: 1100–1600 nm • Range of the Rx optical power: -15 to 2 dBm • The RF output impedance is 75 Ω, with a British F connector, supporting downlink transmission only instead of uplink backhaul. • RF output level: > 82 dBuV • CSO: \geq 62 dB; CTB: \geq 65 dB; CNR: \geq 51 dB

International Headquarters

East-11, Raisecom Building, No.10 Xibeiwang East Road,
Haidian District, Beijing. 100094, China
Tel: +86 10 8288 3305
Fax: +86 10 8288 3056
www.raisecom.com

U.S.A. Headquarters

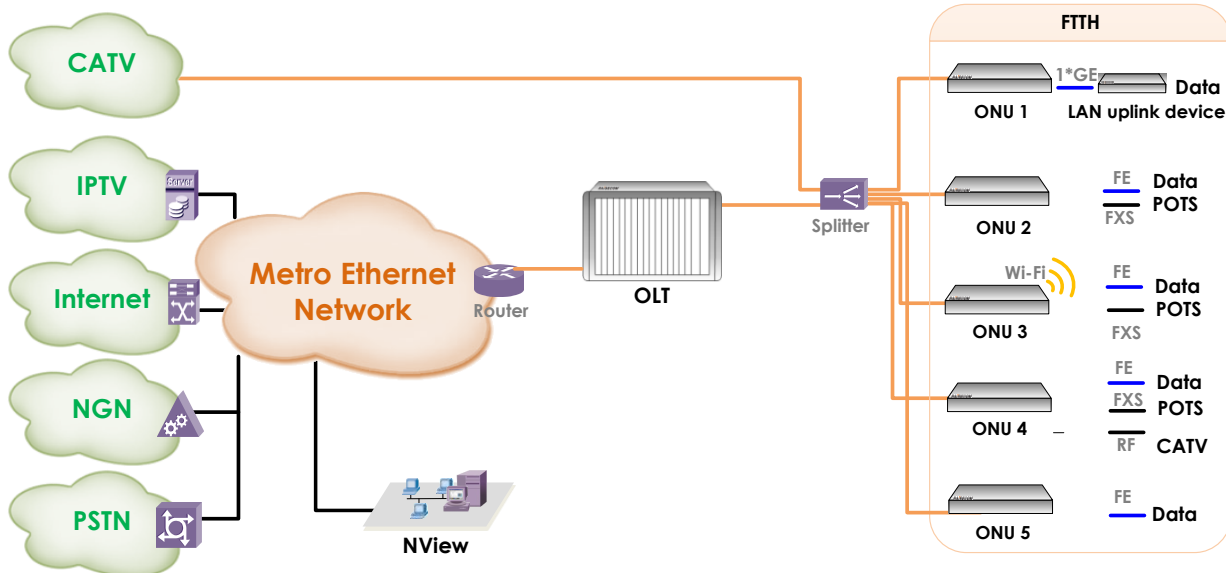
Raisecom, Inc. – U.S. HQ, Florida
Email: sales@raisecominc.com
Tel: 1-888-816-4808
Address: 3031 North Rocky Point Drive
West Suite 100, Tampa, Florida 33607 USA

Raisecom Technology Co., Ltd.

Copyright@1999-2016
All rights reserved
Technical information is subjected to
change without notice



▼ Typical applications



- Networking description**
- Use the ONU directly in the user's home.
 - Use the high-capacity and high-density ISCOM6800 to access huge services
 - The ODN design adopts thin coverage, with a high cost in the early phase
 - Actual installation rate is the key to profit.
 - Provide high-bandwidth services for users and support various emerging services
 - The ONU supports offline configurations, plug and play, thus able to speeding up service activation.
 - Various means for locating faults (broken fiber, power failure, and loop)
 - Guarantee user experiences, improve renewal rate, and increase customer profit.

Ordering information

Model	Version	Description
ISCOM HT803G-U-E-05	T.00(GJ01)	One GPON interface, four 10/100/1000 Mbit/s Ethernet electrical interfaces, two FXS voice interfaces, one British CATV interface, one USB interface, WLAN, and 12 VDC/2 A, external power adapter
ISCOM HT803G-U-E-07	T.00(GJ01)	One GPON interface, four 10/100/1000 Mbit/s Ethernet electrical interfaces, two FXS voice interfaces, one British CATV interface, one USB interface, WLAN, and 12 VDC/2 A, external power adapter