



# LoopView Plus Element Management System

## Features

- GUI (Graphical User Interface)
- Runs on Windows XP/2003/2000/2008 operating systems
- Multiple levels of login security
- Fully supports all SNMP v1 functions including commands, alarms, and statistics gathering
- North Bound Interface covers inventory, alarm, and performance (optional)
- Allows viewing and printing of all node statistics and alarm reports
- Single and multiple graphic windows presentation of devices, statistics, and map
- Network Element List <sup>Note1</sup>
- Groups network elements into hierarchy
- Manual or auto-detection of network elements
- Multicolor display of alarm severity level (loss of power results in an alarm)
- Client/Server architecture
- Configuration/Firmware file upload and download
- Batch Firmware Download
- License information
- Properties (only support system)
- LoopView seamless upgrade to LoopView Plus\*
- Network Topology map with link between NEs (Trunk Management) <sup>Note1</sup>
- Node associated comment/remark
- Port associated comment/remark <sup>Note1</sup>  
(Comment associated with device/port)
- Customer Management
- User-changeable SNMP port number
- User-changeable Alarm trap port number
- User login/logout history
- Node Connection status and statistics
- Configuration backup and restore
- Police-based Alarm forwarding
- Alarm forwarding de-bouncing
- LoopView Plus server redundancy
- Data backup and restore with two modes
- Bulk password change <sup>Note1</sup>
- License information
- Inventory management
- LoopView Plus is now available only for selected products
- Advanced search in NE

\* Future option

<sup>Note1</sup> Only available on selected devices

## Description

LoopView Plus Element Network Management Systems is software that provides a GUI (graphical user interface) for the management of a communications network containing Loop Telecom products.

LoopView Plus runs on Windows XP/2003/2000/2008.

The workforce management is facilitated by multiple levels of login security, which provides the network manager flexibility of work assignments. The hierarchical grouping feature, with cities, buildings, and rooms, allows rapid access to the desired network elements. Automatic detection of network elements and automatic creation of the network map facilities the installation procedure. LoopView Plus covers all the functions of LoopView, with the addition of configuration file upload and download, firmware file download for all plug-in cards, and more advanced management functions.

The full SNMP v1 functions are available in LoopView Plus. This includes the execution of all commands, the gathering of all statistics, and the display of all alarm conditions in real time. The map and the reports can be printed as well as viewed directly.

## Ordering Information

To specify options, choose from the list below.

| Model                | Description   |
|----------------------|---|
| LVPA                 | LoopView Plus   |
| LVPA-CREMS           | LoopView Plus, w/Castle Rock SNMPc Enterprise 8.0 package, w/o hardware   |
| LVPA-NBI             | SNMP North Bound Interface covering performance, inventory and alarm  |
| CREMS                | Castle Rock SNMPc Enterprise 8.0 package included Management Server covering unlimited remote JAVA Console <sup>Note</sup> , unlimited remote Windows Consoles, 10 Remote Polling Agents, and Extended Software Updates <sup>Note</sup> .   |
| <b>Accessories</b>   |   |
| <b>User's Manual</b> |   |
| LoopView Plus-UM     | User's Manual (paper, hard copy-optional). A CD version of the manual is already included as standard equipment.  |
| <b>Maintenance</b>   |   |
| LVPA-ASM             | LoopView Plus Annual Software Maintenance   |
| CREMS-ESU            | Castle Rock SNMPc Enterprise Extended Software Updates <sup>1</sup>   |
| CREMS-OWR            | Castle Rock SNMPc Enterprise Out of Warranty Renewal<br>Customer whose Extended Software Updates has lapsed for more than 60 days must purchase the "Out of Warranty Renewal". This will provide an upgrade to the latest version of SNMPc. It also provides a further 12 months of software update protection. |

### Notes:

- **Castle Rock** is the trademark of Castle Rock Computing.
- Use **MySQL** database to support LoopView Plus
- LoopView does not support Remote JAVA Console
- **Extended Software Updates<sup>1</sup>**: Extended Software Updates covers downloaded patches, feature enhancements and major new versions for one year. All products include the first year of Extended Software Updates free of charge

The list of model supported: AM3440-A, AM3440-B, AM3440C, C5500, C5500A, H3300-3S, IP6610, IP6700, O9100, O9300, O9310, O9330, O9400S-1US4, O9400R, O9500, V4100, V4200-9, C5600, O9340S, W8110, W8140, IP6702, IP6716, IP7920

## LoopView Plus Specifications

### System Requirements

| PARAMETER               | ENTERPRISE  | WORKGROUP   |
|-------------------------|---|---|
| <b>CPU</b>              | Intel Core 2 Due 2.0 GHz or above   | Intel Core 2 Due 2.4 GHz or above   |
| <b>Memory</b>           | 4GB   | 4GB   |
| <b>Disk Free</b>        | 10 GB   | 5 GB  |
| <b>Screen</b>           | 1024 X 768  | 1024 X 768  |
| <b>Mouse Required</b>   | Yes   | Yes   |
| <b>Operating System</b> | Windows 2003 Server<br>Windows XP Professional<br>Windows 2008 Server R2<br>Windows 7 Professional 32/64bit | Windows 2003 Server<br>Windows XP Professional<br>Windows 2008 Server R2<br>Windows 7 Professional 32/64bit |

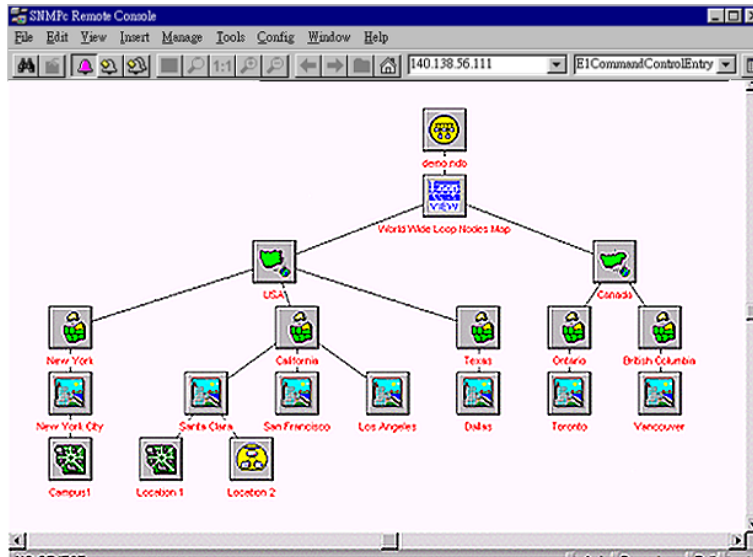
**Maximum Devices** Up to 10,000 network elements, depending on complexity of NEs

**Login Security** 3 levels - (1) Read only,  
 (2) Network element commands,  
 (3) Supervisor for Configuration and User Administration

**Map Creation** Automatic or manual node detection, automatic, or manual map creation

**SNMP Support** Community strings, custom polling, and MIB browsing

**Displays** Multiple views of map, log files, alarms, and device display



Displays of events in 6 levels of severity in multiple colors



**LOOP TELECOMMUNICATION INTERNATIONAL, INC.**  
**ISO 9001 / ISO 14001**

**Worldwide**  
 8F, No. 8, Hsin Ann Road  
 Hsinchu Science Park  
 Hsinchu, Taiwan 30078  
 +886-3-578-7696  
 www.looptelecom.com  
 sales@loop.com.tw

**Taipei, Taiwan**  
 6F, No. 36, Alley 38, Lane 358  
 Rueiguang Road  
 Neihu, Taiwan 11492  
 +886-2-2659-0399  
 michael\_tzeng@loop.com.tw

**North America**  
 8 Carrick Road  
 Palm Beach Gardens  
 Florida 33418, U.S.A.  
 +1-561-627-7947  
 jimber561@aol.com

**Tianjin, China**  
 No. 240 Baidi Road  
 Nankai District  
 Tianjin 300192 China  
 +86-22-8789-4027  
 wym@loop-tj.com