



LoopView Network Management System

Features

- GUI (Graphical User Interface)
- Runs on Windows 7/XP/2003/Windows Server 2008 R2 operating systems
- Multiple levels of login security
- Fully supports all SNMP v1 functions including commands, alarms, and statistics gathering
- Allows viewing and printing of all node statistics and alarm reports
- Single and multiple graphic windows
- Clear presentation of devices, statistics, and maps
- Groups network elements into hierarchy
- Manual or auto-detection of network elements
- Manual or automatic creation of network maps
- Multiple color display of alarm severity level (loss of power results in an alarm)
- Simplified Chinese version is available now for selected products

Description

LoopView Network Management System is software that provides a Graphical User Interface (GUI) for the management of a communications network containing Loop Telecom products. It runs on Windows 7, XP, 2003, Windows Server 2008 R2 operating systems.

Workforce management is facilitated by multiple levels of login security, which provide the network manager flexibility of work assignments. The hierarchical grouping features cities, buildings, and rooms and allows rapid access to the desired network elements. Automatic detection of network elements and automatic creation of the network map facilitate the installation procedure.

All SNMP v1 provided functions are available in LoopView. This includes the execution of all commands, the gathering of all statistics, and the display of all alarm conditions in real time. The map and the reports can be printed as well as viewed directly.

Ordering Information

To specify options, choose from the list below.

Model	Description	Notes
LV-EN	LoopView for English version	Cover all products
LV-EN-CREMS	LoopView for English version w/ Castle Rock SNMPc Enterprise 8.0 package, w/o hardware. Support Window 7	
LV-CS	LoopView for Simplified Chinese	Please see below note ²
LV-CS-CREMS	LoopView for Simplified Chinese w/ Castle Rock SNMPc Enterprise 8.0 package, w/o hardware. Support Window 7	
CREMS	Castle Rock SNMPc Enterprise 8.0 package included Management Server covers unlimited remote JAVA Console ^{Note 1} , unlimited remote Windows Consoles, 10 Remote Polling Agents, and Extended Software Updates ^{Note1} Support Window 7	
CRRAE	Castle Rock Remote Access Extension covers Unlimited Polling Agents	
Accessories		
User's Manual		
LoopView -UM	User's Manual (paper, hard copy-optional). A CD version of the manual is already included as standard equipment.	
Maintenance		
LV-ASM	LoopView Annual Software Maintenance	
CREMS-ESU	Castle Rock SNMPc Enterprise Extended Software Updates ^{Note1}	
CREMS-OWR	Castle Rock SNMPc Enterprise Out of Warranty Renewal Customer whose Extended Software Updates has lapsed for more than 60 days must purchase the "Out of Warranty Renewal". This will provide an upgrade to the latest version of SNMPc. It also provides a further 12 months of software update protection.	

Note 1:

- Castle Rock is the trademark of Castle Rock Computing.
- LoopView does not support Remote JAVA Console
- Extended Software Updates: Extended Software Updates covers downloaded patches, feature enhancements and major new versions for one year. All products include the first year of Extended Software Updates free of charge

Note 2:

- Simplified Chinese version only supports selected products; please contact your nearest Loop sales representative.

LoopView Specifications

System Requirements

CPU	Intel Core 2 Due 2.0 GHz or above
Memory	4 GB
Disk Space	10 GB
Screen	1024 x 768
Mouse and Keyboard	Required
Server/Poller Operating System	Windows 7/XP/2003/2008R2
Console Operating System	Windows 7/XP/2003/2008R2

Login Security

- 3 levels - (1) Read only,
 (2) Network element commands,
 (3) Supervisor for Configuration and User Administration

Map Creation

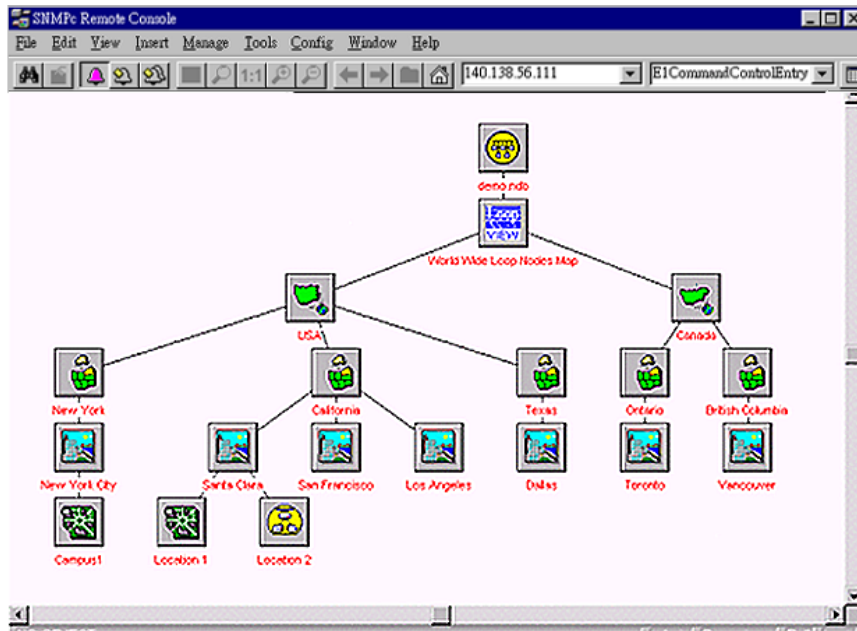
Automatic or manual node detection, automatic or manual map creation

SNMP Support

Community strings, custom polling, MIB browsing

Displays

Multiple views of map, log files, alarms, and device display



Displays of events in 6 levels of severity in multiple colors



LOOP TELECOMMUNICATION INTERNATIONAL, INC.
ISO 9001 / ISO 14001

Worldwide

8F, No. 8, Hsin Ann Road
 Hsinchu Science Park
 Hsinchu, Taiwan 30078
 +886-3-578-7696
 www.looptelecom.com
 sales@loop.com.tw

Taipei, Taiwan

6F, No. 36, Alley 38, Lane 358
 Rueiguang Road
 Neihu, Taiwan 11492
 +886-2-2659-0399
 michael_tzeng@loop.com.tw

North America

8 Carrick Road
 Palm Beach Gardens
 Florida 33418, U.S.A.
 +1-561-627-7947
 jimber561@aol.com

Tianjin, China

No. 240 Baidi Road
 Nankai District
 Tianjin 300192 China
 +86-22-8789-4027
 wym@loop-tj.com