



# LoopView Network Management System



## Description

LoopView is a software product that provides a GUI (graphical user interface) for the management of a communications network containing Loop Telecom products. Because it runs on PC/Windows 2003/XP/2000/NT/ME/98 users can have a GUI management system using a low-cost and popular platform. It is scalable to 25,000 network elements.

The workforce management is facilitated by the multiple levels of login security, which provides the network manager great flexibility of work assignment. The hierarchical grouping feature-cities, buildings, and rooms-allow rapid access to the desired network element. Automatic detection of network elements and automatic creation of the network map facilitates the installation procedure.

All SNMP v1 provided functions are available in LoopView. This includes the execution of all commands, the gathering of all statistics, and the display of all alarm conditions in real time.

The map and the reports can be printed as well as viewed directly.

## Features

- GUI (Graphical User Interface)
- Runs on PC/Windows 2003/XP/2000/NT/ME/98 operating system
- Multiple levels of login security
- Fully supports all SNMP v1 functions including commands,alarms, and statistics gathering
- Allows viewing and printing of all node statistics and alarm report
- Single and multiple graphic windows presentation of devices, statistics, and maps
- Scalable to 25,000 network elements
- Groups network elements into hierarchy
- Manual or auto-detect of network elements
- Manual or automatic creation of network maps
- Multiple color display of alarm severity level (loss of power results in an alarm)

## Ordering Information

To order specify,

Model	Description
LV	LoopView
LV-CRBSS	LoopView w/ Castle Rock Basic Server System
CRBSS	Castle Rock Basic Server System
CRRAE	Castle Rock Remote Access Extension

\***Castle Rock** is the trade mark of Castle Rock Computing

**CERTIFIED  
ISO-9001**

## LoopView Specifications

### System Requirements

<b>CPU</b>	Pentium III 1GHz
<b>Memory</b>	512 MB
<b>Disk Free</b>	2 GB
<b>Screen</b>	800 x 600
<b>Mouse Required</b>	Yes
<b>Server/Poller Operating System</b>	Win XP/2K/2K3/NT Will also run under WIN ME and 98 if not using the JAVA console.
<b>Console Operating System</b>	Win XP/2K/2K3/NT/ME/98

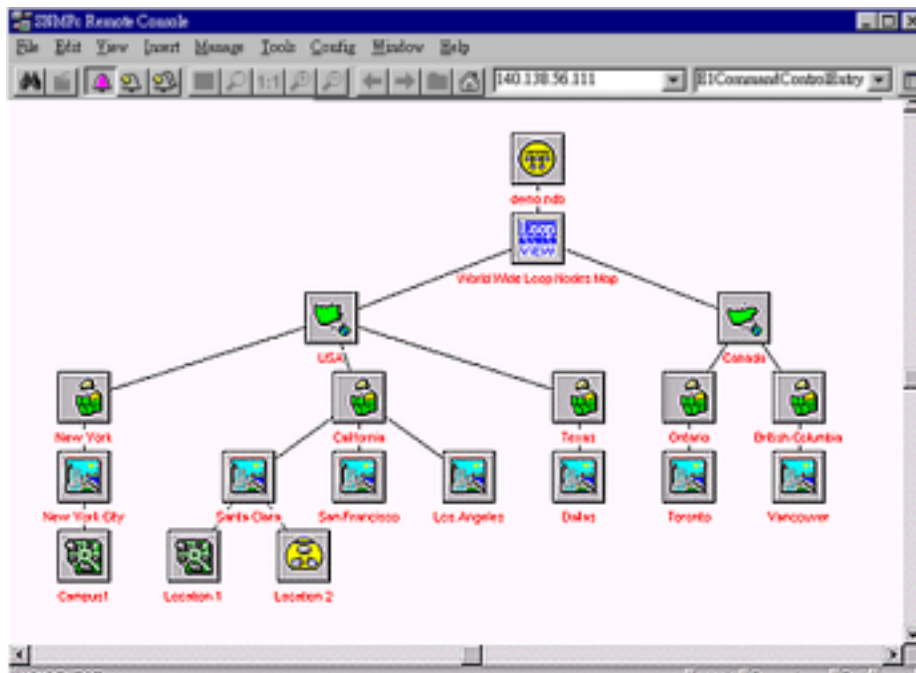
Maximum devices 25,000 manageable devices

Login Security 3 levels - (1) Read only,  
(2) Network element commands,  
(3) Supervisor for Configuration and User Administration

Map creation Automatic or manual node detection, automatic or manual map creation

SNMP support Community strings, custom polling, MIB browsing

Displays Multiple views of map, log files, alarms, and device display



**Displays of events in 6 levels of severity in multiple colors**



## **LOOP TELECOMMUNICATION INTERNATIONAL, INC.**

### **Worldwide**

8F, No. 8, Hsin Ann Road,  
Science-Based Industrial Park  
Hsinchu, Taiwan 300  
Tel:+886-3-578-7696  
Fax:+886-3-564-6272  
www.LoopTelecom.com  
sales@loop.com.tw

### **Taipei, Taiwan**

2F, No. 40, Section 2,  
Tuan-Hwa S. Road,  
Taipei, Taiwan 106  
Tel:+886-2-2784-4000  
Fax:+886-2-2754-2325

### **North America**

8 Carrick Road  
Palm Beach Gardens  
Florida 33418, U.S.A.  
Tel:+1-561-627-7947  
Fax:+1-561-627-6615  
jimber561@aol.com

### **Suzhou China**

Tel:+86-512-6252-0456  
Fax:+86-512-6252-7641  
www.looptech.com.cn  
Info@looptech.com.cn  
Sales@looptech.com.cn

### **Tianjin China**

Tel:+86-22-8789-2753  
Fax:+86-22-8789-0344  
Loop@loop-tj.com