

## RC952-FEDS3/E3 Interface Converter

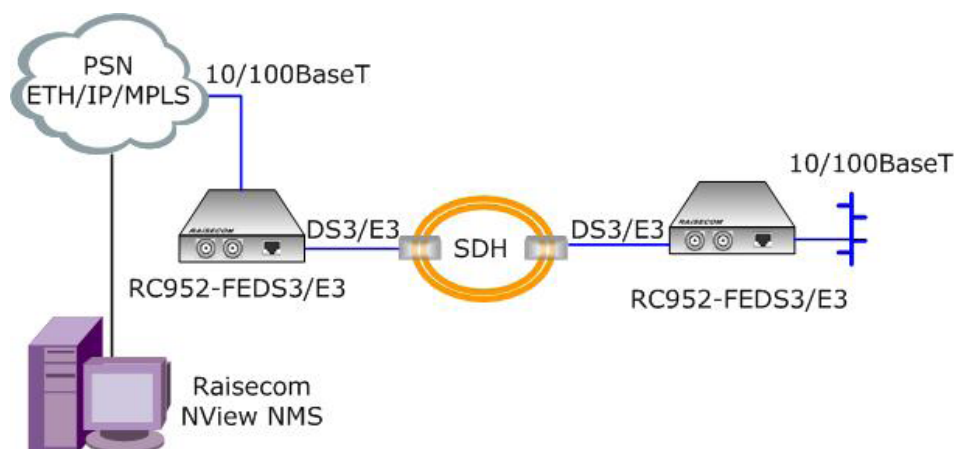
RC952-FEDS3/E3 is Raisecom new generation Interface converter that delivers Fast Ethernet service over existing TDM transportation network. It can be installed in RC002 16-slot chassis for central site or in RC001-1 chassis as standalone unit for customer premise, realizing the integrated SNMP management and enabling an economical path towards extending the distance of existing Ethernet

network by utilizing existing DS3 and E3 resources. Additionally its advanced features such as DS3/E3 loop back, Fault Pass Through, auto laser shutdown and remote network management provide carriers a flexible, reliable and cost-effective solution for high-quality Ethernet Service delivery by using TDM network resources.

### Feature

DS3/E3 mode	Unframed mode
Interface rate of transmission line	DS3 or E3 configurable through DIP-switch
Ethernet Encapsulation	HDLC-over-E1
Loop Back	Support local and remote loop back
BERT function	Inner BERT enables a flexible way of testing E1 links
Clock Mode	Master and Slave
Maximum Transmission Unit	1916 bytes
Flow control	IEEE802.3x in full duplex
VLAN	VLAN transparent forwarding
Fault Pass Through	Ethernet interface will be shutdown automatically if all E1 links failed
Management/remote management	DIP-switch configuration, SNMP management in RC002 16-slot or single-slot chassis and monitoring/configuring remote end unit through central module

### Application 1

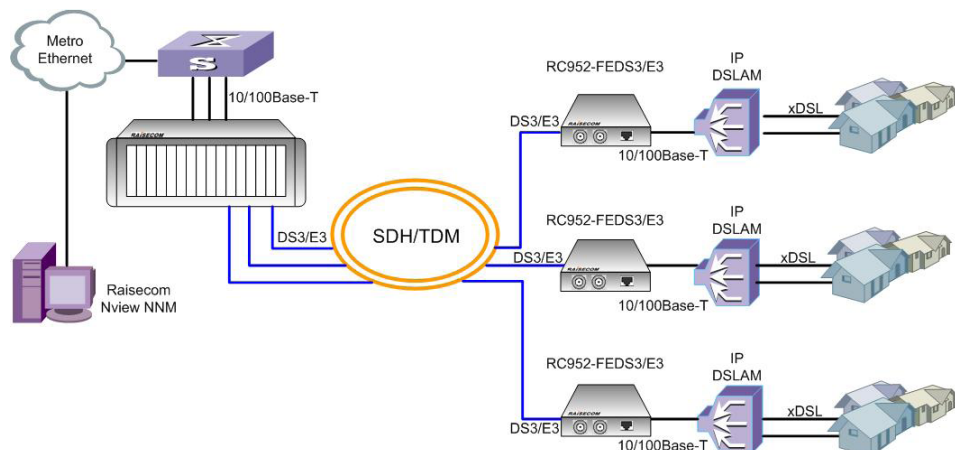


RC952-FEDS3/E3 Fast Ethernet over DS3/E3 Interface Converter

### Specification

Electrical fast Ethernet port	Speed: 10/100BaseT Connector: RJ-45 MDI/MDIX auto crossover IEEE802.3x flow control
E3 interface	Rate: 34.368MHz Connector: BNC Impedance: 75ohm Line coding: HDB3
DS3 interface	Rate: 44.736MHz Connector: BNC Impedance: 75ohm Line coding: B3ZS
Dimension	91(W)*172(D)*25(H)mm
Weight	0.23kg
Power supply	AC: 90~264V, 47~63Hz DC: - 36~75V
Power consumption	≤ 5W (at max load)
Working ambience	Temp: -5~50 centigrade RH: 20~90% non-condensing
Storage ambience	Temp: -25~85 centigrade RH: 20~90% non-condensing
Safety compliance	CE marking FCC Class A

## Application 2



## Compliance

### Standards & protocols

IEEE802.3 Ethernet  
 IEEE802.3x full duplex on  
 10BaseT, 100BaseTX ports  
 IEEE802.3u 100BaseTX  
 ITU-T G.703  
 ITU-T G.704  
 ITU-T G.823  
 Bellcore GR-499-CORE and  
 ANSI T1.102\_1993  
 Bellcore GR-499 CORE  
 Category I and Category II,  
 ITU-T G.824  
 Bellcore GR-499 CORE,  
 ITU-T G.824

## Ordering Information

Part Number	Description
RC952-FEDS3/E3	Fast Ethernet over DS3/E3 Interface Converter, 75ohm unbalanced DS3/E3 connector