

MSG2110-GEF SOHO/Home Gateway

The MSG2110-GEF is highly integrated Gigabit Ethernet FTTH wireless gateway, which is designed to interoperate with various Ethernet Switches from major vendors to meet the worldwide residential market requirements. The integrated Gigabit Ethernet gateway features with automatic crossover correction and speed auto negotiation for convenient connecting to end-user's PC and LAN equipment. Alternatively the built-in 802.11n WLAN brings relief to those troublesome wirings. By offering such flexibility to service providers with one model that fits different kinds of Internet applications, MSG2110-GEF brings maximal benefit to the customers.

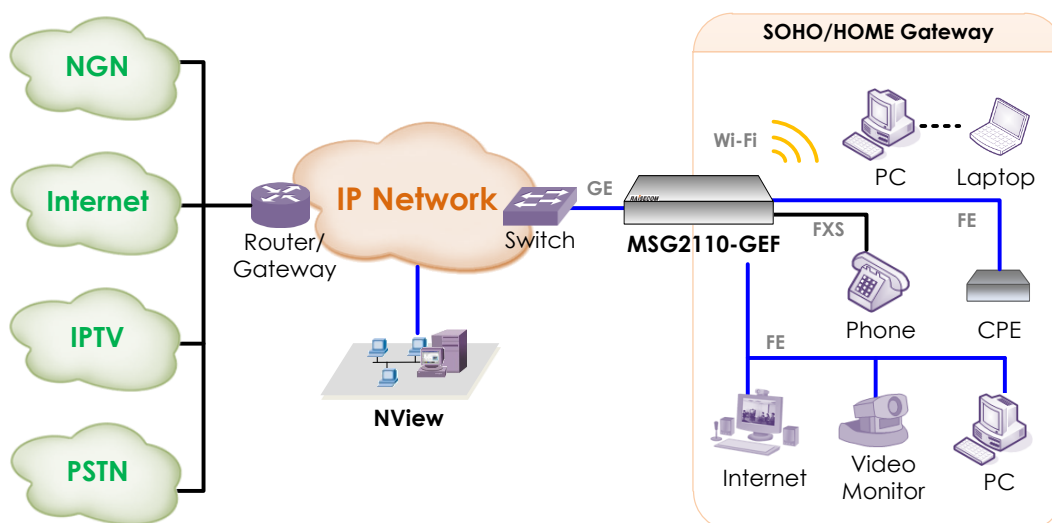


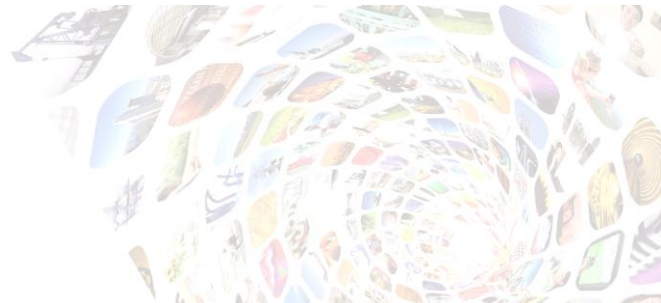
MSG2110-GEF

Highlights

- Connection Features** 1 x GE combo uplink at WAN side, 4 x 10/100/1000Base-T ports at LAN side, 2 x FXS (RJ11) ports, and 2 x WLAN antenna complying with IEEE802.11n/b/g;
- Service Assurance** Support IEEE802.1q, 802.1p and TOS/Diff-Serv
- Integrated Network** Support RIP v1 and v2, policy routing and static route, NAT/NAPT, DHCP, DNS/DDNS, IEEE802.11b/g/n, and FXS ports for VoIP using POTS phone set
- Advanced Security** Firewall; NAT; Secure transmitting encryption by either 802.1x, WEP, WEP2, WPA, WPA2, TKIP, AES, 802.11i
- Easy Management** Management via Web/HTTP, TR-069/104, SNMP, CLI; Firmware upgradeable through HTTP or TFTP

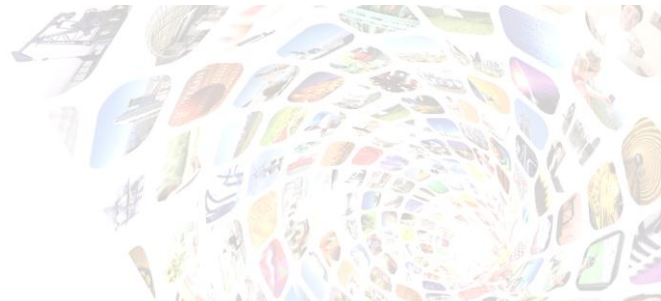
Typical Application





Key Features

Networking Protocol	Supports point-to-point protocol with user authentication via PAP, CHAP or MS-CHAP; PPP pass-through and filtering; Transparent bridging; IP Multicast IGMPv1/v2/v3, proxy and snooping; 16 VLAN either port-based or per 802.1q; Support insert/remove tag and VLAN priority remarking;
Routing	Routing Information Protocol (RIP) v1 and v2, policy routing and static route; DHCP client, server and relay agent; NAT/PAT - RFC1631 with support for extensive ALGs; DNS relay and proxy server; Dynamic DNS;
Firewall and Security features	Full cone NAT with DMZ host and ALG support; Port forwarding and triggering; Stateful Packet Inspection (SPI) with DOS attack protection -Ping of Death, SYN flooding, IP smurfing, teardrop, land and etc; Packet filtering on L3, L2 or physical interface; UPnP NAT traversal and VPN/IPSec pass through; Parental control and URI/URL filtering; Three level login and service access control;
WLAN features	Support 802.1x, WEP, WEP2, WPA, WPA2, TKIP, AES, 802.11i; Hidden SSID; multiple SSID; WMM for advanced QoS; 125 High Speed Mode: Standards-plus performance enhancement delivers best real-world performance as the client card uses the same technology;
QoS	IP/Bridge/802.1p QoS; Support 4-level priority queues per port with WRR/WFQ/SP scheduling; Token bucket rate control per I/O port, traffic policy or WFQ;
Voice features	Supports voice CODECs like G.711, G.726, G.729AB, BV16, ILBC, T.38, and etc; G.168 line echo cancellation with programmable tail ; Adaptive jitter buffer, packet loss concealment (PLC), voice activity detection (VAD), comfort noise generation (CNG) and Caller ID; DTMF tone detection and generation; Fax/Modem detection and pass-through;
VoIP & Telephony bonus service	Support SIP (RFC3261), SDP (RFC2327, RFC3264) as well as both TCP and UDP transport; Support User Agent Client (UAC) - User Agent Server (UAS) call, or proxy call routing; Support SIP and telephone URL addressing; Support in-band DTMF tone sending/receiving and out-of band DTMF signaling with RTP



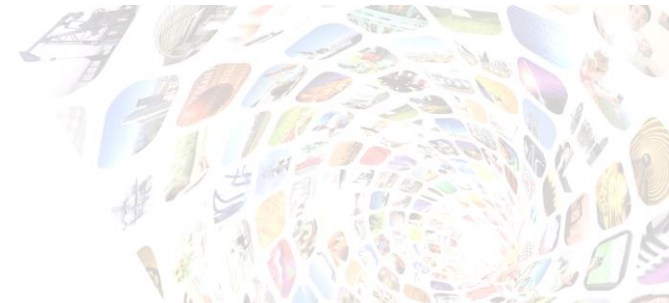
as per RFC2833;
Bonus services include:
- Call Forwarding: Unconditional, No Response, On Busy
- Call waiting: Force Busy, Pickup and Release Old, Pickup and Put Old on Hold, Switch between two calls
- Call Transfer, Call back busy subscriber, Call Back last number called (call return)
- Enquiry service
- Three way conference;
Provisioning through TFTP client with configuration profile;

Specifications

WAN Interface	1xGbE combo interface;
LAN Interface	4 x 10/100/1000M RJ45, auto-MDI/MDIX; IEEE 802.11b/g/n(2x2)WLAN, 2 external antenna; 2xFXS RJ11 ports;
LED Indicators	Power (Green/Red); WAN (Green); Internet (Green); Ethernet (Green); WLAN (Green); TEL1/TEL2 (Green); Speed/Act for each ETH;
WLAN on/off control	One button at front-top to Turn on or off the WLAN AP functionality
Dimension	(W*D*H)228mm*151mm*32mm(main body only)
Weight	<2kg
Power supply	AC to DC adapter: input 100~240VAC 50/60 HZ output 12VDC 1.5Amp 100V~240VAC
Power consumption	≤ 15Watts (at max load)
Working environment	Temp: 0 ~ 45 Celsius RH:5 ~ 95% non-condensing

Compliances

Standards & protocols	IEEE802.3-2002 IEEE802.3u 1000BaseTX IEEE802.1w IEEE802.3ad IEEE802.3x full duplex on 1000BaseTX IEEE802.1q-2003 IEEE802.1p IEEE802.11b IEEE802.11g IEEE802.11n G.711 G.726 G.729A T38 RFC3261 RFC2327 RFC3264 RFC2833 TR-064 TR-069 TR-104
-----------------------	---



Certificate

CE: EN55022;
EN55024;
EN300328;
EN301489;
FCC: Part 15b & 15c;
LVD: IEC60950-1 (ed. 1);
UL-60950;

Ordering Information

MSG2110-GEF

1 x GE combo at WAN side, 4 GE + 2 FXS +802.11n/b/g Wi-Fi LAN interfaces, 100-240V AC adapter