



# LoopView Plus Element Management Systems

## Features

### All LoopView

- GUI (Graphical User Interface)
- Runs on PC/Windows XP/2003/ 2000 operating system
- Multiple levels of login security
- Fully supports all SNMP v1 functions including commands, alarms, and statistics gathering
- Allows viewing and printing of all node statistics and alarm report
- Single and multiple graphic windows presentation of devices, statistics, and map
- Scalable to 1,000 network elements
- Groups network elements into hierarchy
- Manual or auto-detect of network elements
- Multiple color display of alarm severity level (loss of power results in an alarm)

### LoopView Plus (Basic)

- Client /Server architecture
- Configuration file upload and download
- Firmware file download for all plug-in cards
- LoopView seamless upgrade to LoopView Plus\*

### LoopViewPlus (Advanced)

- Network Topology map with link between NEs (Trunk Management)
- Port /Node associated comment/remark (Comment associated with device/port)
- Customer Management
- SNMP port number user changeable
- Alarm trap port number user changeable
- User login logout history
- Node Connection status and statistics
- LoopView seamless upgrade to LoopView Plus\*
- Police-based Alarm forwarding
- Alarm forwarding de-bouncing

\* Future Option

## Description

LoopView Plus, Element Network Management Systems, is a software product that provides a GUI (graphical user interface) for the management of a communications network containing Loop Telecom products for addition of a database management.

LoopView plus runs on PC/Windows /XP/20032000 using a low-cost and popular platform which are scalable to 1,000 network elements.

The workforce management is facilitated by the multiple levels of login security, which provides the network manager great flexibility of work assignment. The hierarchical grouping feature-cities, buildings, and rooms-allow rapid access to the desired network element. Automatic detection of network elements and automatic creation of the network map facilities the installation procedure. LoopView Plus covers all the functions of LoopView and addition of configuration file upload and download, firmware file download for all plug-in cards, and more advanced management functions.

The full SNMP v1 functions are available in LoopView Plus. This includes the execution of all commands, the gathering of all statistics, and the display of all alarm conditions in real time.

The map and the reports can be printed as well as viewed directly.

## Ordering Information

To order specify:

Model	Description
LVPB	LoopView Plus Basic
LVPB -CREMS	LoopView Plus Basic, w/ Castle Rock SNMPc Enterprise Management Server, w/o hardware
LVPA	LoopView Plus Advanced
LVPA-CREMS	LoopView Plus Advanced, w/ Castle Rock Basic Server System
CREMS	Castle Rock SNMPc Enterprise 7.1 package included Management Server covers JAVA Console, 10 Windows Consoles, 10 Remote Polling Agents, and Extended Software Updates <sup>1</sup>
CRRAE	Castle Rock Remote Access Extension covers Unlimited Polling Agents & Consoles
<b>Accessories</b>	
<b>User's Manual</b>	
LoopView Plus-UM	User's Manual (paper, hard copy-optional). A CD version of the manual is already included as standard equipment.
<b>Maintenance</b>	
LVPB-ASM	LoopView Plus Basic Annual Software Maintenance
LVPA-ASM	LoopView Plus Advance Annual Software Maintenance
CREMS-ESU	Castle Rock SNMPc Enterprise 7.1 Extended Software Updates <sup>1</sup>
CREMS-OWR	Castle Rock SNMPc Enterprise 7.1 Out of Warranty Renewal Customer whose Extended Software Updates has lapsed for more than 60 days must purchase the "Out of Warranty Renewal". This will provide an upgrade to the latest version of SNMPc. It also provides a further 12 months of software update protection.

### Note:

- **Castle Rock** is the trade mark of Castle Rock Computing.
- Use **MySQL** database to support LoopView Plus
- **Extended Software Updates<sup>1</sup>**: Extended Software Updates covers downloaded patches, feature enhancements and major new versions for one year. All products include the first year of Extended Software Updates free of charge

## LoopView Plus Specifications

### System Requirements

CPU	Pentium III 1GHz
Memory	1 GB
Disk Free	10 GB
Screen	800 x 600 or Above
Mouse Required	Yes
Server/Poller Operating System	Win XP/2003/2000
Console Operating System	Win XP/2003/2000

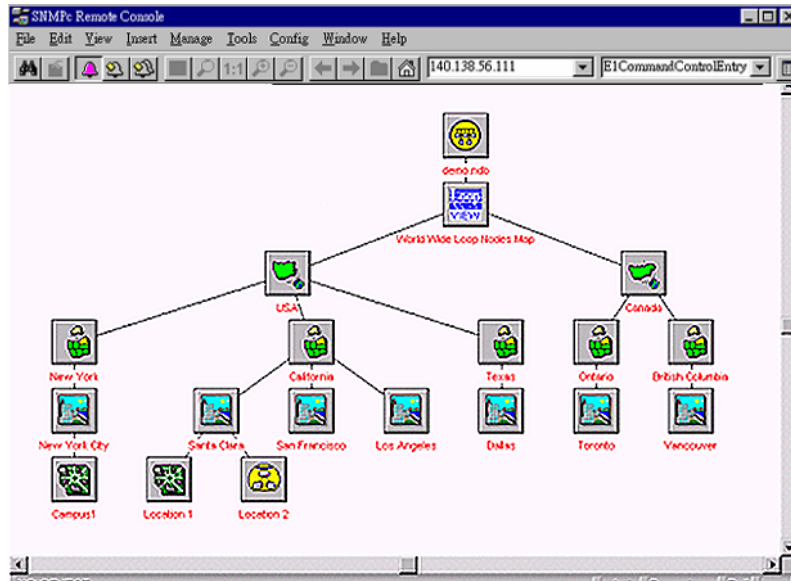
**Maximum devices** 25,000 manageable devices

**Login Security** 3 levels - (1) Read only,  
(2) Network element commands,  
(3) Supervisor for Configuration and User Administration

**Map creation** Automatic or manual node detection, automatic or manual map creation

**SNMP support** Community strings, custom polling, MIB browsing

**Displays** Multiple views of map, log files, alarms, and device display



Displays of events in 6 levels of severity in multiple colors



## LOOP TELECOMMUNICATION INTERNATIONAL, INC.

ISO-9001/ISO-14000

### Worldwide

8F, No. 8, Hsin Ann Road,  
Science-Based Industrial Park  
Hsinchu, Taiwan 300  
Tel:+886-3-578-7696  
Fax:+886-3-564-6272  
www.LoopTelecom.com  
sales@loop.com.tw

### Taipei, Taiwan

6F, No. 36, Alley 38, Lane 358,  
Rueiguang Road,  
Neihu, Taiwan 11492  
Tel:+886-2-2659-0399  
Fax:+886-2-26959-2325  
michael\_tzeng@loop.com.tw

### North America

8 Carrick Road  
Palm Beach Gardens  
Florida 33418, U.S.A.  
Tel:+1-561-627-7947  
Fax:+1-561-627-6615  
jimber561@aol.com

### Suzhou China

Tel:+86-512-6252-0456  
Fax:+86-512-6252-7641  
www.looptech.com.cn  
sales@looptech.com.cn

### Tianjin China

Tel:+86-22-8789-2753  
Fax:+86-22-8789-0344  
Loop@loop-tj.com