



# Loop-IP6500 VPN Router

## Description

Loop-IP6500 VPN Router is a multiple purpose enterprise gateway that provides security, routing, and traffic management features.

### ■ Router

The IP6500 provides 3 built-in Ethernet ports for internal networks (LAN1 to LAN3) and two built-in Ethernet ports for WAN connections (WAN1 and WAN2). With two cold-swappable plug-in modules, the IP6500 can extend its WAN links up to 4.

### ■ Firewall/ VPN

The IP6500 can be an enterprise security gateway that provides firewall and IPsec tunnels. When the IP6500 is used as a firewall, one LAN interface is reserved as a DMZ port, which allows service requests, like Web and FTP, from a public network.



## Features

- Supports 6 built-in Ethernet ports: 3 LAN ports, one DMZ port and 2 WAN ports
- Provide multiple function as Router, firewall, VPN, and QoS
- Supports 10/100 BaseT speed auto-sensing and half/ full duplex auto-negotiation.
- Multicolor LED indicators.
- Local control and diagnostic via DB9S console port.
- Local/ remote management through local console, LAN, or WAN
- Supports Telnet and SSH remote management
- Supports web management
- Supports SNMP management
- Provide Triple Play Services (Data, Voice, and Video)
- [Entire product RoHS Compliant](#)

**CERTIFIED  
ISO-9001**

### RoHS Compliance Statement

This product complies with DIRECTIVE 2002/95/EC OF THE EUROPEAN PARLIAMENT AND OF THE COUNCIL on the restriction of the use of certain hazardous substances in electrical and electronic equipment, dated 27 January 2003, including ANNEX.

## Ordering Information

To specify options, choose the list below:

**Note:** RoHS compliant units are identified by the letter **G** appearing immediately at the end of ordering code.

Model	Description
<b>Main Unit</b>	
Loop-IP6500-aa-bb-pp-add- <b>G</b>	
<b>Accessories</b>	
<b>User's Manual (All User's Manuals are RoHS compliant)</b>	
Loop-IP6500-UM	User's Manual (optional, printed on paper copy). A CD version of the manual is already included as standard equipment.
<b>Power Cord (All power cords are RoHS compliant)</b>	
Loop-ACC-PC-USA	AC power cord for Taiwan/USA
Loop-ACC-PC-EU	AC power cord for Europe
Loop-ACC-PC-UK	AC power cord for the UK
Loop-ACC-PC-AUS	AC power cord for Australia
Loop-ACC-PC-CH	AC power cord for China

■ where **aa** is used to select one additional option. If this option is not required, omit the **aa** field in the ordering code.

aa =	Description	Note
<b>Eth</b>	10/100 Ethernet plug-in Card	For O9310-CPU version only

■ where **bb** is used to select one additional option. If this option is not required, omit the **bb** field in the ordering code.

bb	Description	Note
<b>Eth</b>	10/100 Ethernet plug-in Card	For O9310-CPU version only

■ where **pp** is used to select power supply:

pp =	Description	Note
<b>P9</b>	Combination AC and DC(100-240Vac and –48Vdc dual feed)	Please choose an appropriate power cord

■ where **add** is used to select one additional option. If this option is not required, omit the **add** field in the ordering code.

add =	Description	Note
<b>FW</b>	Firewall Function	You can order one, two, or three of these add functions per IP6500 device.
<b>VPN</b>	VPN function	
<b>QoS</b>	Quality of Service Function	

# **Loop-IP6500 VPN Router Product Specifications**

## **LAN Interface**

- Four built-in Ethernet ports
- Each Ethernet port can have its own IP address
- One of the 4 LAN ports is reserved for DMZ.

## **WAN Interface**

- Two built-in Ethernet ports (WAN1 and WAN2) and two optional WAN ports (A port and B port).
- Support Ethernet interface

## **Ethernet Interface**

- Auto-negotiation
- Can force interface speed to be 10 or 100 Mbps
- Can force interface duplex mode to be half or full
- Link down alarm
- MDI/MDIX auto-crossover

## **IP Routing**

- Routing Protocols
- OSPF
- RIP V1/ V2
- Static

## **DHCP**

- DHCP
- DHCP server support for LAN users
- DHCP relay

## **Firewall**

- Filter based on source/destination IP address, source/destination port number, and protocol type.
- Stateful inspection
- DoS
- TCP stateful inspection

## **Management**

- SNMP v1, v2c, and v3
- Telnet
- HTTP Web-based management
- SSH

## **Console Port**

Connector DB9S  
Electric RS232

## **Power Interface**

AC: 100 to 240 Vac, 1A  
DC: 36 to 72 Vdc, 1.3A

## **NAT**

- Address Translation
- NAT and NAPT
- Virtual service

## **QoS**

- Policy based rate limiting

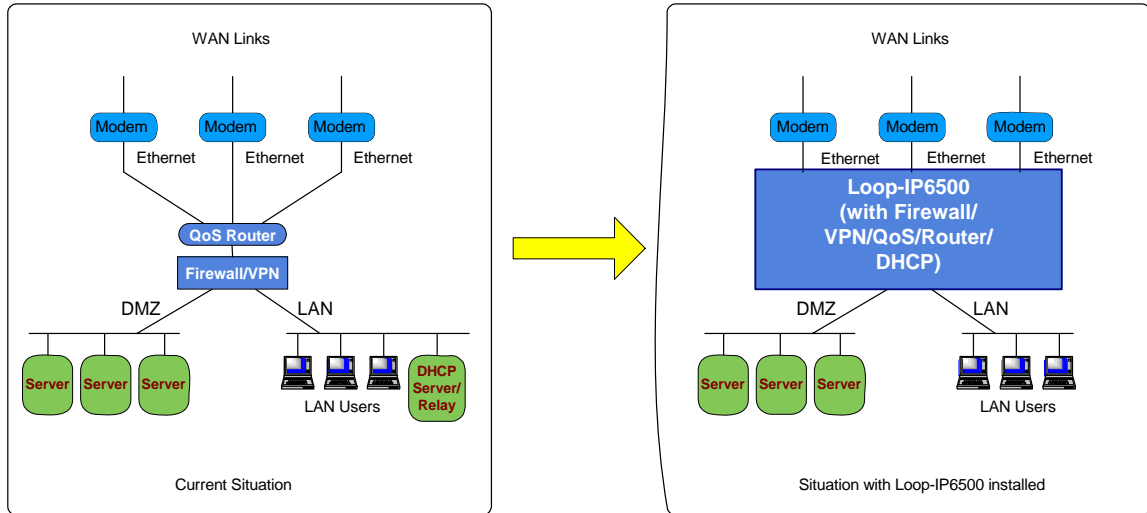
## **IPsec VPN**

- Manual-keyed tunnel
- IKE auto-keyed tunnel
- Encryption: DES, 3DES, AES
- Authentication: MD5, SHA-1
- AH/ESP tunnel mode
- Up to 32 concurrent tunnels
- IKE
- Pre-shared authentication key
- RSA authentication

## **Physical**

Dimensions 432 x 44 x 226.5 mm (WxHxD)  
Temperature 0 -50°C  
Humidity 0-95% RH (NON-CONDENSING)  
Mounting Rack Mount

# Application Illustration



## LOOP TELECOMMUNICATION INTERNATIONAL, INC.

### Worldwide

8F, No. 8, Hsin Ann Road,  
Science-Based Industrial Park  
Hsinchu, Taiwan 300  
Tel:+886-3-578-7696  
Fax:+886-3-564-6272  
www.LoopTelecom.com  
sales@loop.com.tw

### Taipei, Taiwan

2F, No. 40, Section 2,  
Tuan-Hwa S. Road,  
Taipei, Taiwan 106  
Tel:+886-2-2784-4000  
Fax:+886-2-2754-2325

### North America

8 Carrick Road  
Palm Beach Gardens  
Florida 33418, U.S.A.  
Tel:+1-561-627-7947  
Fax:+1-561-627-6615  
jimber561@aol.com

### Suzhou China

Tel:+86-512-6252-0456  
Fax:+86-512-6252-7641  
Sales@looptech.com.cn

### Tianjin China

Tel:+86-22-8789-2753  
Fax:+86-22-8789-0344  
Loop@loop-tj.com