

# CV24BR

## BRI to BRI modem over copper

### CV24BR

- 4 ISDN BRI modem over 4 wire up to 1,6km
- Deport of 4 BRI from PBX or Public Network
- BRI NT or TE, T0 or S0

### OTHER EQUIPMENT FOR BRI DISTRIBUTION:

#### CV24BR

- 4 ISDN BRI converter CSU/DSU to G703/G704
- Interface converter to PDH/SDH or MW links
- Distribution of BRI over TDM Network

#### FO82BR or FO84BR

- 2 or 4 ISDN BRI modem over fiber optic
- Fiber optic multimode or singlemode up to 117km

#### CB2000

- 1 or 2 PRI (30B+D) to 8, 16 or 32 BRI (2B+D) channel bank, optional PRI NT
- BRI switching platform for video-conferencing, data

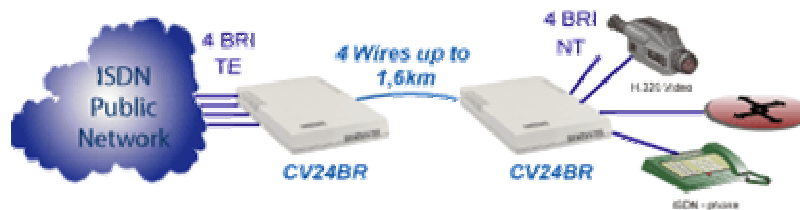
#### PR8000

- ISDN switch of 8 PRI
- LCR capabilities

## DISTRIBUTION and DEPORT of ISDN BRI

*CXR, developer and manufacturer of Telecom equipment for 30 years, has widen his range of ISDN equipment including several Terminal Adapters, ISDN Router, Channel Bank PRI/BRI and PRI concentrator with a new range for the deport and the distribution of ISDN BRI's.*

## DEPORT OF BRI OVER COPPER



The CV24BR a modem over 4 copper wires is able to interconnect up to a distance of 1,6 km 4 ISDN BRI from a PBX or directly from 4 S0 Public Network terminations to one to four ISDN equipments.

This Modem is intended to:

- Extend the line in the customer side from the Public termination to his PBX
- Interconnect 2 PBX in a campus over 4 wires and 1,6km
- Extend the BRI line over the standard 200m and to gain the number wire
- Distribute easily BRI for Visio station H.320 jus by 2 copper pair from the PBX or the Visio bridge.

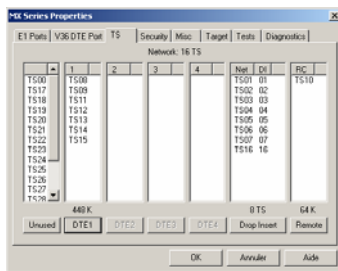
The range of CV24BR and FO84BR is supporting point to point connection (T0) or bus connection (S0).

In a pair one equipment must be set as TE in order to be connect the Network or the PBX while the other end is set as NT to connect to the ISDN terminal.



**Interface Converter G703/G704**

CV2000 stand alone unit and AMS16 chassis - SNMP



MXCFG graphical management software



Rue de l'Ornette  
28410 Abondant  
France

Phone : 02.37.62.87.90  
Fax : 02.37.62.88.01  
Email: trans@cxr.fr

## SPECIFICATIONS

**Line**

- Distance 1,6 km with 4 wires 24 AWG, 0,4mm
- Rate : 2.048 BPS +/- 50 ppm
- Framing: clear G703, framed G704, PCM31, PCM31C
- Jitter: G823.
- Line code : HDB3
- Receive level : 0 to -43 dBm
- Clock : network, internal, terminal.
- Impedance : 120 Ohms, RJ45 socket
- CV2000-BNC option : 75 Ohms / BNC.
- Insulation : 1500V as per ITU-T K20,K21

**Timeslot allocation**

- Any combination, user defined : no restriction
- Remote control : through a dedicated timeslot or synchronisation bits
- Nx64 (E1) or Nx64/Nx56 (T1)

**Power Supply**

- External : 110 / 230 Vac : CV-MX 2000-PVx
- Internal : 110 / 230 Vac : CV-MX 2000-Plx
- Internal : 48 (12-36) Vdc : CV-MX 2000-PCx
- Rack : CV 2000-PRx.

**Four ISDN BRI interface**

- 4 ISDN BRI So interfaces
- RJ45 socket, TE / NT mode through dip switches
- Each B channel is allocated a G704 timeslot
- D channels : multiplexed in a single timeslot, or each D channel is allocated a dedicated timeslot
- Control of layer 1 : activation
- Transparent to layer 2 and 3 protocols
- Optional external So bus powered feeding

**Front panel**

- Led : POWER indicator
- Led : Interface activation : C/X21, RTS/V35, LAN/10BT
- Led : Network synchronisation - loss of carrier
- Led ERR : CRC error detection or G703 LCV ( Line Code Violation)
- Led DATA : active data on G703.
- Led TEST : active test.
- Push button : cancel alarm condition

**Administration**

- Console port : V24/V28
- Format : 19,200 BPS, 8 bits, parity none
- Mode : friendly VT100 menus, AT commands
- MXCFG Windows™ graphical software
- Local or remote unit control.
- Diagnostics : local and remote loops - V54 B3 and B4.
- Statistics over 24 hours : CRC, LOS, FAS, BCV
- Administration in the AMS16 rack with the CFIP card : telnet, ftp, SNMP.
- Administration through a network with one time slot (1 to 31) or TS0 with the bit SA4.

**Physical**

- Standalone : 196mm x 120mm x 44mm.
- Weight : 900g.
- Operating temperature : 0 to 50 degree C
- FCC part 15, CE : EN 60950, EN 50081-1, 50082-1

## CV2000 / MX2000 REFERENCES

**CV 2XXX - PYZ**

- Z- Network interface / country  
E E1 / Europe

**XXX — Terminal Interface (DTE)**

- 030 RS530  
011 V11  
035 V35  
036 V36  
028 RS232 async / sync  
4BR 4 ISDN BRi interfaces ()  
OBT Ethernet bridge

**Y- Equipment**

- C internal power supply 48 Vdc (opt 12-36)  
I internal power supply 110 / 240 Vac  
R Rack mount card for AMS16/4 chassis  
V stand alone with external power supply

**Options:**

- CV2000-BNC : BNC sockets / 75 Ohms  
CV2000-ASYM : asymmetrical up&down rates

**P Standard front panel with LED indicators**

*The information contained in this document are provided without warranty and do not constitute a contractual document. In order to improve its products, CXR reserves its right to modify without notice any part of this document.*